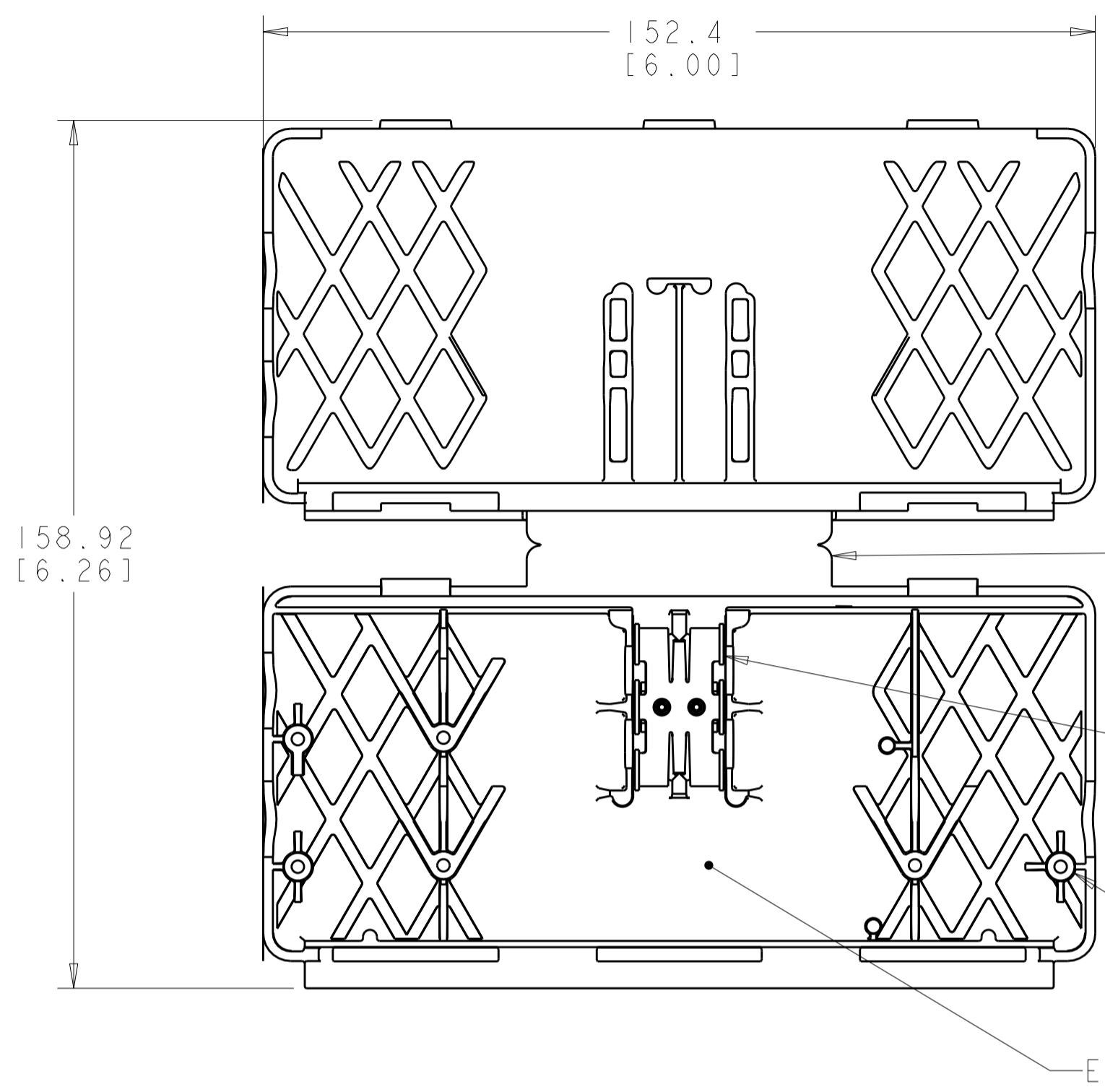
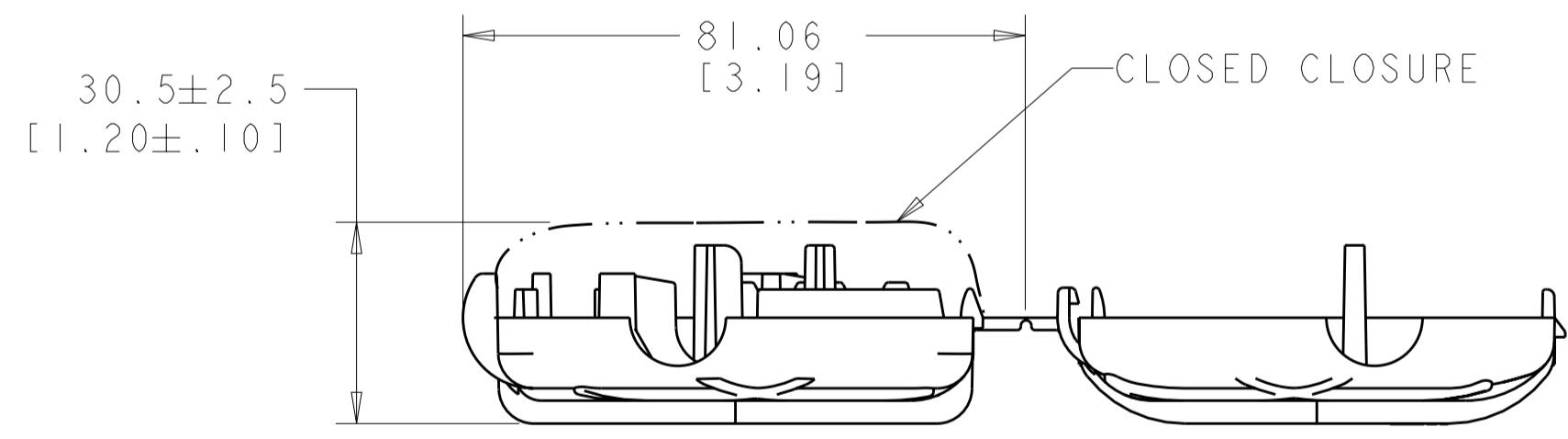
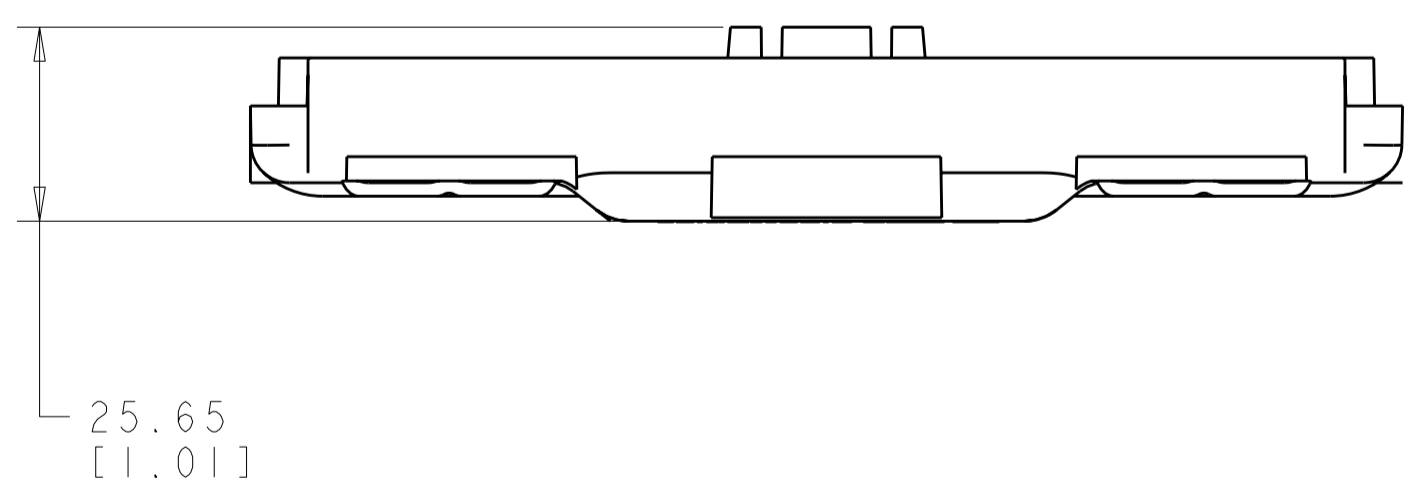


THIS DRAWING IS UNPUBLISHED. RELEASED FOR PUBLICATION 20
 © COPYRIGHT 20 BY TYCO ELECTRONICS CORPORATION. ALL RIGHTS RESERVED.

LOC		DIST		REVISIONS			
P	LTR	DESCRIPTION	DATE	DWN	APVD		
C		REV; ECO-09-006580	30MAR2009	GG	NJ		



1. MATERIAL: CLOSURE: POLYPROPYLENE MOLDING COMPOUND, BLACK.
 TERMINAL - BRASS.
 GEL - AMP SEALANT #20.
2. UNIT WILL ACCEPT 2 THROUGH 6 PAIR BURIED SERVICE WIRE.
3. GROUNDING SHIELDS WILL BE CONNECTED BY INTERGRATED SHIELD DISTORTION CONNECTOR.
4. TWISTED PAIRS SHALL BE TERMINATED USING INDUSTRY STANDARD WIRE SPLICES.
5. APPLICATION IS ACCOMPLISHED BY PRESSING PREPARED CABLE ENDS INTO THE SHIELD DISTORTION CONNECTOR, ALIGNING THE CABLES IN THE STRAIN RELIEFS PROVIDED, ARRANGING THE SPLICES IN THE ADJACENT GEL CONTAINMENT AREA, AND ENGAGING THE LATCHES BY FOLDING THE UNIT CLOSED AROUND THE SPLICE.



569579-1
 PART NUMBER

THIS DRAWING IS A CONTROLLED DOCUMENT FOR TYCO ELECTRONICS CORPORATION. IT IS SUBJECT TO CHANGE AND THE CONTROLLING ENGINEERING ORGANIZATION SHOULD BE CONTACTED FOR THE LATEST REVISION.		DWN B. SIMPSON 16OCT96	Tyco Electronics Harrisburg, PA 17105-3608	
DIMENSIONS: MM [INCHES]		CHK BHS 20JAN97	NAME CLOSURE ASSEMBLY, SERVICE WIRE SPLICE	
TOLERANCES UNLESS OTHERWISE SPECIFIED: 0 PLC ± 1 PLC ± 2 PLC ±0.51 [.02] 3 PLC ± 4 PLC ± ANGLES ± FINISH		APVD G. THRUSH 22JAN97	RESTRICTED TO	
MATERIAL		PRODUCT SPEC 108-1673	SIZE A200779	DRAWING NO C-569579
1		APPLICATION SPEC 408-3371	SCALE	
CUSTOMER DRAWING		WEIGHT	SHEET OF REV C	