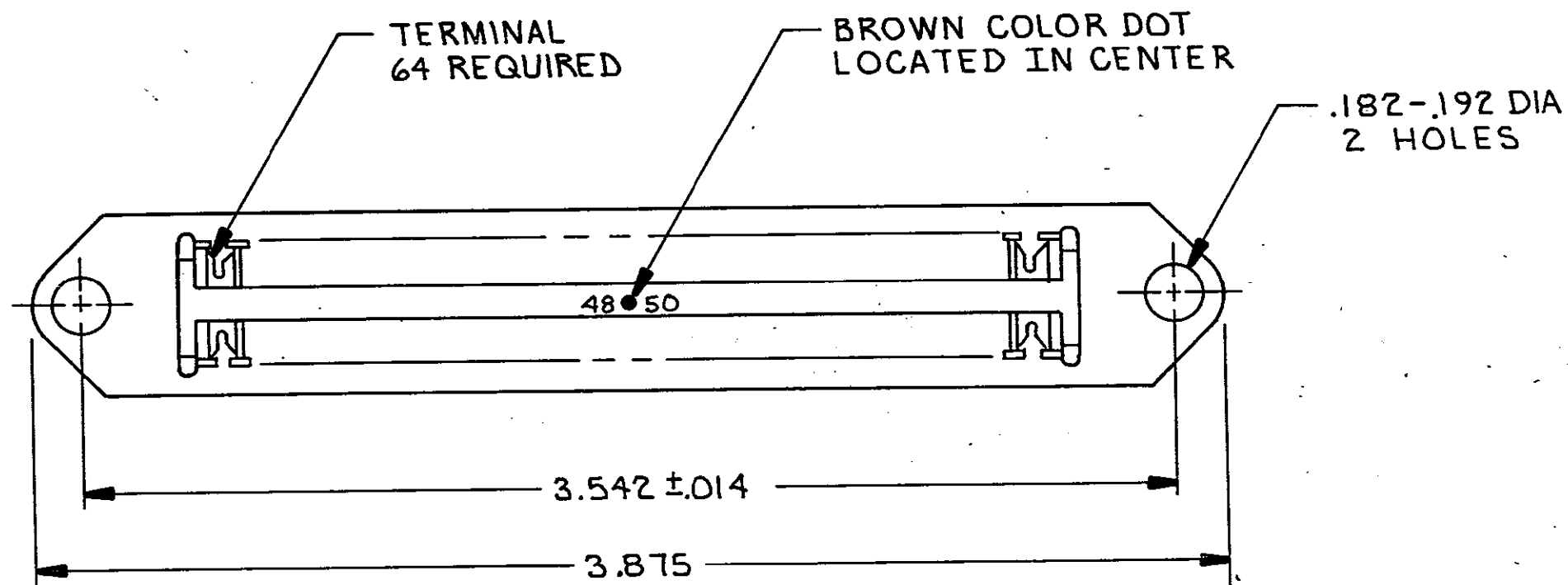
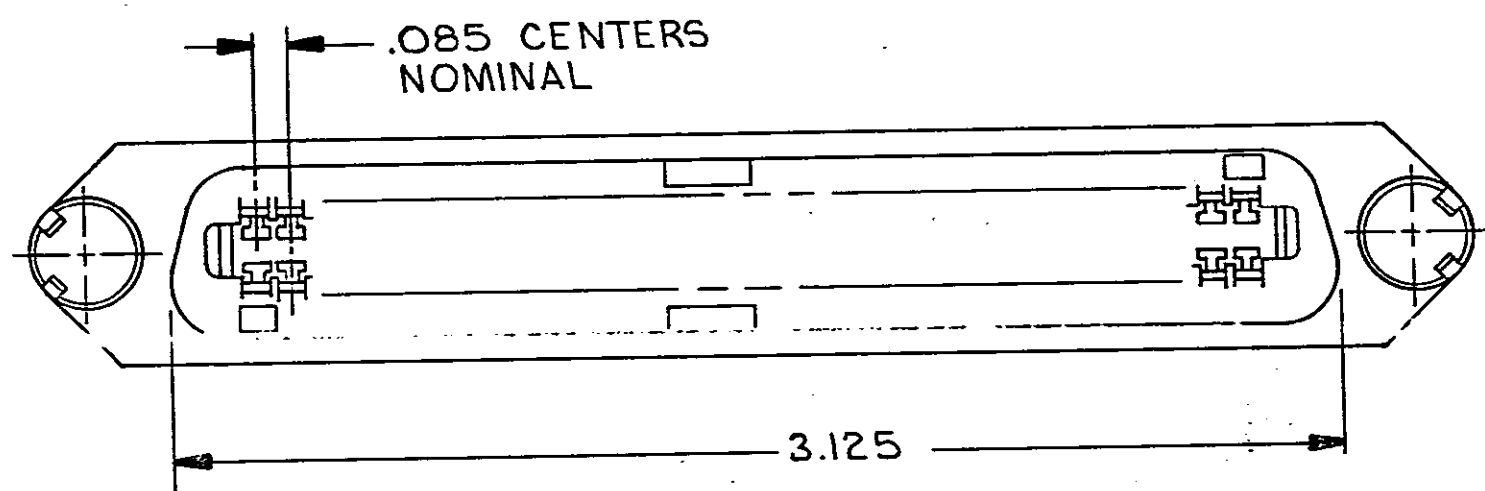
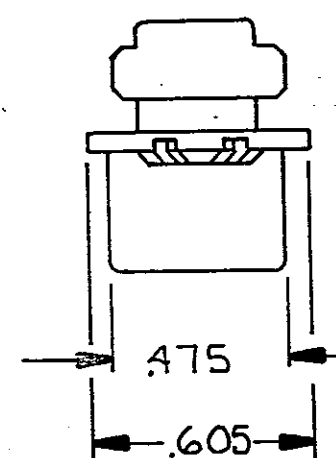
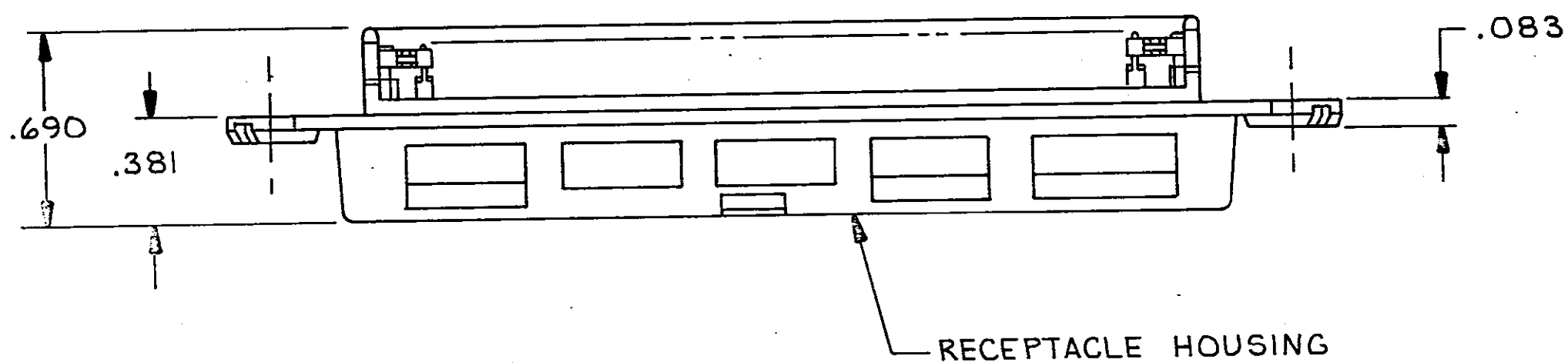


THIS DRAWING IS UNPUBLISHED. RELEASED FOR PUBLICATION, 19
 © COPYRIGHT 19 BY AMP INCORPORATED, HARRISBURG, PA. ALL INTERNATIONAL RIGHTS RESERVED. AMP PRODUCTS MAY BE COVERED BY U.S. AND FOREIGN PATENTS AND/OR PATENTS PENDING.

P		F		ZONE		LTR		REVISIONS		LOC	DIST
A		A		REV		ECN		AA	4972	AA	20
								DATE	APPROVED		
								5/18/88	<i>dm</i>		



1. THE CONTACT SURFACES OF THE TERMINALS ARE COATED WITH LUBRICANT.
2. ALL DIMENSIONS SHOWN ARE MAXIMUM UNLESS OTHERWISE SPECIFIED.
3. MATERIAL: HOUSING-POLYPHENYLENE OXIDE, BLACK. TERMINALS - GOLD OVER NICKEL PLATED HIGH STRENGTH COPPER ALLOY.
4. WIRE SIZE : 22 AWG SOLID OR STRANDED COPPER CONDUCTORS. INSULATION DIAMETER OF .045-.056 IS ACCEPTABLE FOR MOST APPLICATIONS.
5. ASSEMBLIES BULK PACKAGED IN UNITS OF 100 IN A NON-STATIC GENERATING PACKAGING MATERIAL.
6. SEE PRODUCT SPECIFICATION 108-6005 FOR PERFORMANCE SPECIFICATION.



WAS 86-1210-119-147

555151

PACKAGED	555151-1
	PART NO

UNLESS OTHERWISE SPECIFIED DIMENSIONS ARE IN INCHES. TOLERANCES ON: DECIMALS ± ANGLES ±	CONTRACT NO		AMP INCORPORATED Harrisburg, Pa. 17105	
	DR <i>C. Yates</i> 6-15-87			
	MATERIAL	CHK	RECEPTACLE ASSEMBLY, 64 POSITION, F SLOT, THIN FLANGE, CHAMP-LOK®	
		APPD		
FINISH	APPD	SIZE	FSCM NO	DRAWING NO
	DSGN APPD	C	00779	555151
	OTHER APPD	SCALE 2:1		SHEET 1 OF 1