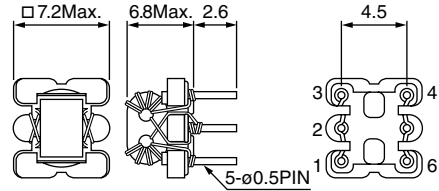
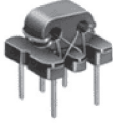


## TYPE B7T: Leaded

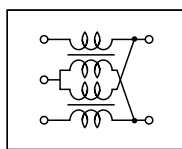
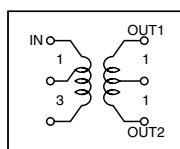
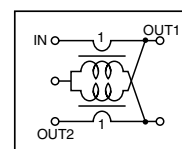


(Unit: mm)

## STANDARD TRANSFORMERS SELECTION GUIDE

| TYPE B7T              |                             |                           |  |      |
|-----------------------|-----------------------------|---------------------------|--|------|
| TOKO Part Number      | Number of turns per Winding | Operating Frequency Range | Insertion Loss   | Fig. |
| Double Balanced Mixer |                             |                           |  |      |
| 456DB-1013            | 1                           | 50MHz~400MHz              | 10dB max.  | 1    |
| 456DB-1014            | 2                           | 10MHz~ 1.0GHz             | 6dB max.   | 1    |
| 456DB-1005            | 3                           | 8MHz~800MHz               | 3.5dB max.   | 1    |
| 456DB-1006            | 4                           | 6MHz~600MHz               | 2.5dB max.   | 1    |
| 456DB-1007            | 5                           | 5MHz~500MHz               | 2dB max.   | 1    |
| 456DB-1009            | 2                           | 400MHz~ 1.3GHz            | 4dB max.   | 1    |
| Distributor           |                             |                           |  |      |
| 456DS-1012            |                             | 20MHz~600MHz              | IN to OUT-1, 2<br>4.5dB max.<br><br>OUT-1 to OUT-2<br>(ISOLATION)<br>10dB min. | 2    |
| Directional Coupler   |                             |                           |  |      |
| 456PS-1015            | 4                           | 6MHz~600MHz               | IN to OUT-1 1.3dB max.<br>IN to OUT-2 11dB~14dB                                | 3    |
| 456PS-1016            | 5                           | 6MHz~600MHz               | IN to OUT-1 0.9dB max.<br>IN to OUT-2 13dB~16dB                                | 3    |
| 456PS-1011            | 6                           | 6MHz~600MHz               | IN to OUT-1 0.8dB max.<br>IN to OUT-2 15dB~17dB                                | 3    |

## Pin Connections

Double balanced mixer  
Fig. 1Distributor  
Fig. 2Directional coupler  
Fig. 3