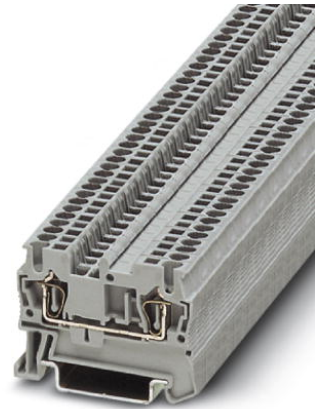


ST 1,5

Order No.: 3031076

<http://eshop.phoenixcontact.de/phoenix/treeViewClick.do?UID=3031076>

Feed-through modular terminal block, Type of connection: Spring-cage connection, Cross section: 0.08 mm² - 1.5 mm², AWG 28 - 16, Width: 4.2 mm, Color: gray, Mounting type: NS 35/7,5, NS 35/15



Commercial data	
EAN	4017918186616
Pack	50 pcs.
Customs tariff	85369010
Weight/Piece	0.004974 KG
Catalog page information	Page 56 (CL-2007)

Product notes

WEEE/RoHS-compliant since:
01/01/2003



<http://www.download.phoenixcontact.com>
Please note that the data given here has been taken from the online catalog. For comprehensive information and data, please refer to the user documentation. The General Terms and Conditions of Use apply to Internet downloads.

Technical data**General**

Number of levels	1
Number of connections	2
Color	gray

Insulating material	PA
Inflammability class acc. to UL 94	V0

Dimensions

Width	4.2 mm
Length	48.5 mm
Height NS 35/7,5	36.5 mm
Height NS 35/15	44 mm

Technical data

Maximum load current	17.5 A (with 1.5 mm ² conductor cross section)
Rated surge voltage	6 kV
Pollution degree	3
Surge voltage category	III
Insulating material group	I
Connection in acc. with standard	IEC 60947-7-1
Nominal current I _N	17.5 A
Nominal voltage U _N	500 V
Open side panel	ja

Connection data

Conductor cross section solid min.	0.08 mm ²
Conductor cross section solid max.	1.5 mm ²
Conductor cross section stranded min.	0.08 mm ²
Conductor cross section stranded max.	1.5 mm ²
Conductor cross section AWG/kcmil min.	28
Conductor cross section AWG/kcmil max	16
Conductor cross section stranded, with ferrule without plastic sleeve min.	0.14 mm ²
Conductor cross section stranded, with ferrule without plastic sleeve max.	1.5 mm ²
Conductor cross section stranded, with ferrule with plastic sleeve min.	0.14 mm ²
Conductor cross section stranded, with ferrule with plastic sleeve max.	1.5 mm ²
2 conductors with same cross section, stranded, TWIN ferrules with plastic sleeve, max.	0.5 mm ²
Type of connection	Spring-cage connection
Stripping length	10 mm

Internal cylindrical gage	A1
---------------------------	----

Certificates / Approvals



Certification BV, CB, CSA, CUL, DNV, GL, GOST, KR, LR, NK, UL, VDE-PZI

Certification Ex: IECEX, KEMA-EX

CSA

Nominal voltage U_N	300 V
Nominal current I_N	15 A
AWG/kcmil	26-14

CUL

Nominal voltage U_N	300 V
Nominal current I_N	15 A
AWG/kcmil	26-14

UL

Nominal voltage U_N	300 V
Nominal current I_N	15 A
AWG/kcmil	26-14

Accessories

Item	Designation	Description
Assembly		
3030721	ATP-ST 4	Partition plate, Length: 61 mm, Width: 2 mm, Height: 42 mm, Color: gray
3022218	CLIPFIX 35	Snap-on end bracket, for 35 mm NS 35/7.5 or NS 35/15 DIN rail, can be fitted with Zack strip ZB 8 and ZB 8/27, terminal strip marker KLM 2 and KLM, width: 9.5 mm, color: gray
3030417	D-ST 2,5	End cover for modular terminal blocks, Length: 48.5 mm, Width: 2.2 mm, Height: 36.5 mm, Color: gray
1201442	E/UK	End clamp, for supporting the electronic base. If mounted vertically, 2 end clamps are required in each case

0801762	NS 35/ 7,5 CU UNPERF 2000MM	DIN rail, material: Copper, unperforated, height 7.5 mm, width 35 mm, length: 2 m
0801733	NS 35/ 7,5 PERF 2000MM	DIN rail, material: Steel, galvanized and passivated with a thick layer, perforated, height 7.5 mm, width 35 mm, length: 2 m
0801681	NS 35/ 7,5 UNPERF 2000MM	DIN rail, material: Steel, unperforated, height 7.5 mm, width 35 mm, length: 2 m
1201756	NS 35/15 AL UNPERF 2000MM	DIN rail, deep-drawn, high profile, unperforated, 1.5 mm thick, material: Aluminum, height 15 mm, width 35 mm, length 2 m
1201895	NS 35/15 CU UNPERF 2000MM	DIN rail, material: Copper, unperforated, 1.5 mm thick, height 15 mm, width 35 mm, length: 2 m
1201730	NS 35/15 PERF 2000MM	DIN rail, material: Steel, perforated, height 15 mm, width 35 mm, length: 2 m
1201714	NS 35/15 UNPERF 2000MM	DIN rail, material: Steel, unperforated, height 15 mm, width 35 mm, length: 2 m
1201798	NS 35/15-2,3 UNPERF 2000MM	DIN rail, material: Steel, unperforated, 2.3 mm thick, height 15 mm, width 35 mm, length: 2 m

Bridges

3030116	FBS 2-4	Cross connector/jumper for modular terminal block, Number of positions: 2, Color: red
3030129	FBS 3-4	Cross connector/jumper for modular terminal block, Number of positions: 3, Color: red
3030132	FBS 4-4	Cross connector/jumper for modular terminal block, Number of positions: 4, Color: red
3030145	FBS 5-4	Cross connector/jumper for modular terminal block, Number of positions: 5, Color: red
3030158	FBS 10-4	Cross connector/jumper for modular terminal block, Number of positions: 10, Color: red
3030352	FBS 20-4	Cross connector/jumper for modular terminal block, Number of positions: 20, Color: red

Marking

3030958	WST 1,5	Warning cover, 5-pos., for terminal width: 4.2 mm
0805823	ZB 4:SO/CMS	Zack strip, 10-section, divisible, special printing, marking according to customer requirements
0803634	ZBFM 4:SO/CMS	Special printing, Zack marker sheet, flat, 100-section, divisible, marking according to customer requirements

Plug/Adapter

3206131	ISH 1,5/0,2	Insulation stop sleeve, Color: white
3031034	ISH 1,5/0,5	Insulation stop sleeve, Color: gray
0201744	MPS-MT	Metal part for test connector
3030925	PAI-4	Test adapter, Color: gray

3030970	PS-4	Test adapter, Color: red
0201647	RPS	Reducing plug, Color: gray

Tools

1204504	SZF 0-0,4X2,5	Screwdriver, blade: 0.4 x 2.5 x 100 mm, length 180 mm
---------	---------------	---

Drawings

Circuit diagram



Address

PHOENIX CONTACT Inc., USA
586 Fulling Mill Road
Middletown, PA 17057, USA
Phone (800) 888-7388
Fax (717) 944-1625
<http://www.phoenixcon.com>



© 2009 Phoenix Contact
Technical modifications reserved;