

ST-OE2- 24DC/ 48DC/100

Order No.: 2911692

The illustration shows version ST-OV 2- 5 DC/ 48 DC/100



<http://eshop.phoenixcontact.de/phoenix/treeViewClick.do?UID=2911692>

Pluggable input optocoupler, with light indicator and protection circuits in the input and output circuits, input: 24 V DC, output: 8 - 48 V DC/ max. 100 mA, can be plugged on basic termination blocks

Commercial data	
EAN	4017918079710
Pack	10 Pcs.
Customs tariff	85364190
Weight/Piece	0.02261 KG
Catalog page information	Page 93 (IF-2005)

Product notes

WEEE/RoHS-compliant since:
04/25/2007



<http://www.download.phoenixcontact.com>
Please note that the data given here has been taken from the online catalog. For comprehensive information and data, please refer to the user documentation. The General Terms and Conditions of Use apply to Internet downloads.

Technical data

Input data

Nominal input voltage U_N	24 V DC \pm 10%
Switching threshold "0" signal in reference to U_N	\leq 0.4
Switching threshold "1" signal in reference to U_N	\geq 0.8
Typical input current at U_N	9 mA
Typical response time	20 μ s
Typical turn-off time	100 μ s
Status display	Yellow LED
Name of protection	Polarity protection
	Surge protection
Protective circuit/component	Polarity protection diode
	RC element
Transmission frequency	500 Hz

Output data

Output nominal voltage range	8 V DC ... 48 V DC
Limiting continuous current	100 mA
Voltage drop at max. limiting continuous current	0.9 V
Output circuit	2-conductor floating
Name of protection	Polarity protection
	Surge protection
Protective circuit/component	Polarity protection diode

General data

Length	33 mm
Width	14.6 mm
Height	66.5 mm
Test voltage input/output	2.5 kV AC
Ambient temperature (operation)	-20 °C ... 60 °C
Ambient temperature (storage/transport)	-20 °C ... 70 °C
Mounting position	Any
Standards/regulations	DIN VDE 0110

Certificates / Approvals

Approval logo

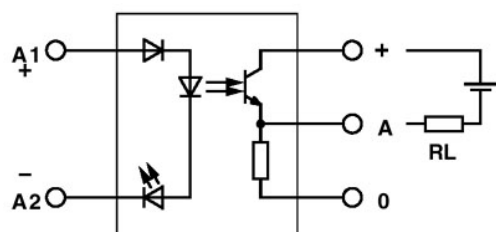


requested approbations

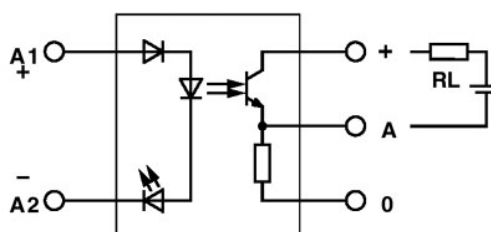
Certification	GOST
---------------	------

Drawings

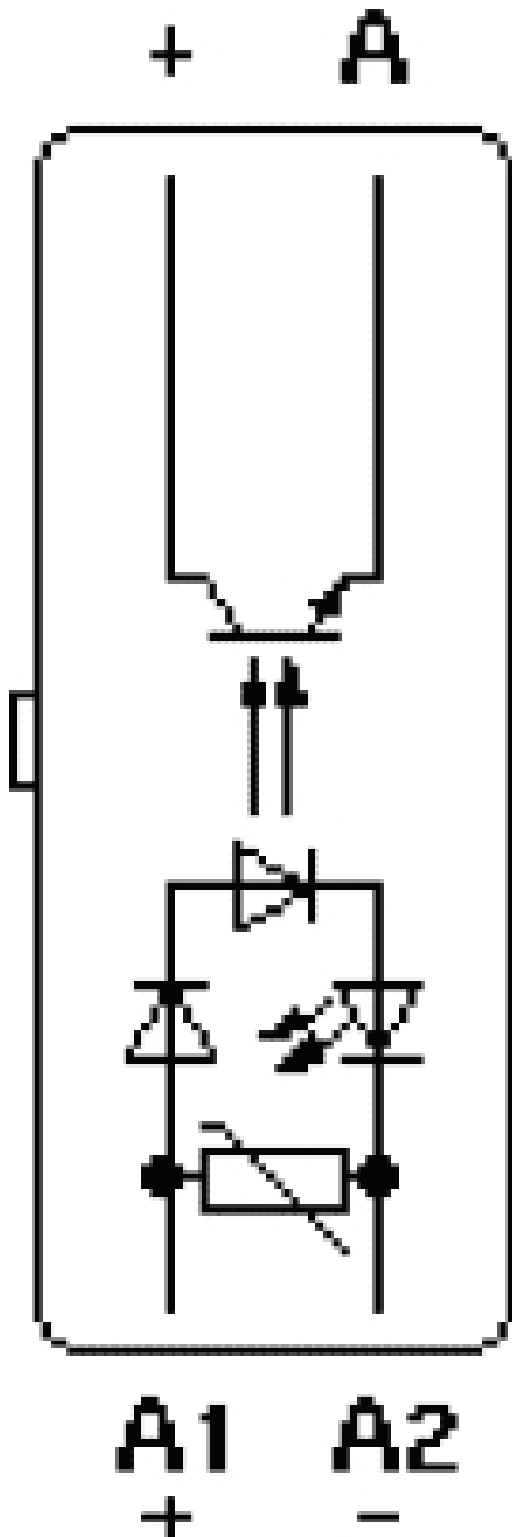
Circuit diagram



Output: 2-wire, floating, plus switching



Output: 2-wire, floating, minus switching



Address

PHOENIX CONTACT GmbH & Co. KG
Flachsmarktstr. 8
32825 Blomberg, Germany
Phone +49 5235 3 00
Fax +49 5235 3 41200
<http://www.phoenixcontact.de>



© 2008 Phoenix Contact
Technical modifications reserved;