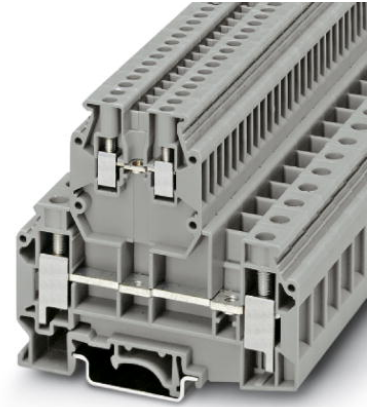


UKKB 10/2,5-PV

Order No.: 2775485

The illustration shows version UKKB 10/2,5

<http://eshop.phoenixcontact.de/phoenix/treeViewClick.do?UID=2775485>

Double-level terminal block with a screw connection, cross section: 0.5 mm² - 10 mm², AWG: 24 - 6, width: 10.2 mm, color: Gray

Commercial data

EAN	4017918068592
Pack	50 Pcs.
Customs tariff	85369010
Weight/Piece	0.042436 KG
Catalog page information	Page 292 (CL-2007)

Product notes

WEEE/RoHS-compliant since:
01/01/2003

<http://www.download.phoenixcontact.com>
Please note that the data given here has been taken from the online catalog. For comprehensive information and data, please refer to the user documentation. The General Terms and Conditions of Use apply to Internet downloads.

Technical data

General

Number of levels	2
Number of connections	4
Color	gray
Insulating material	PA
Inflammability class acc. to UL 94	V0

Dimensions

Width	10.2 mm
Length	77.5 mm
Height NS 35/7,5	73 mm
Height NS 35/15	80.5 mm
Height NS 32	78 mm

Technical data

Rated surge voltage	6 kV
Pollution degree	3
Surge voltage category	III
Insulating material group	I
Connection in acc. with standard	IEC 60947-7-1
Nominal voltage U_N	500 V

Connection data

Conductor cross section solid min.	0.5 mm ²
Conductor cross section solid max.	16 mm ²
Conductor cross section stranded min.	0.5 mm ²
Conductor cross section stranded max.	10 mm ²
Conductor cross section stranded, with ferrule without plastic sleeve min.	0.5 mm ²
Conductor cross section stranded, with ferrule without plastic sleeve max.	10 mm ²
Conductor cross section stranded, with ferrule with plastic sleeve min.	0.5 mm ²
Conductor cross section stranded, with ferrule with plastic sleeve max.	6 mm ²
2 conductors with same cross section, solid min.	0.5 mm ²
2 conductors with same cross section, solid max.	6 mm ²
2 conductors with same cross section, stranded min.	0.5 mm ²
2 conductors with same cross section, stranded max.	4 mm ²
2 conductors with same cross section, stranded, ferrules without plastic sleeve, min.	0.5 mm ²
2 conductors with same cross section, stranded, ferrules without plastic sleeve, max.	6 mm ²

2 conductors with same cross section, stranded, TWIN ferrules with plastic sleeve, min.	0.5 mm ²
2 conductors with same cross section, stranded, TWIN ferrules with plastic sleeve, max.	6 mm ²
Type of connection	Screw connection
Internal cylindrical gage	B6
Screw thread	M 4
Tightening torque, min	1.5 Nm
Tightening torque max	1.8 Nm

Certificates / Approvals

Approval logo



CSA

Comments	Lower level
Nominal voltage U _N	300 V
Nominal current I _N	65 A
AWG/kcmil	24-6
Comments	Upper level
Nominal voltage U _N	300 V
Nominal current I _N	20 A
AWG/kcmil	28-12

CUL

Comments	Lower level
Nominal voltage U _N	600 V
Nominal current I _N	65 A
AWG/kcmil	24-6
Comments	Upper level
Nominal voltage U _N	600 V
Nominal current I _N	20 A
AWG/kcmil	30-12

UL

Comments	Lower level
Nominal voltage U_N	600 V
Nominal current I_N	65 A
AWG/kcmil	24-6
Comments	Upper level
Nominal voltage U_N	600 V
Nominal current I_N	20 A
AWG/kcmil	30-12
Certification	CSA, CUL, GOST, UL

Accessories

Item	Designation	Description
Assembly		
3022218	CLIPFIX 35	Snap-on end bracket, for 35 mm NS 35/7.5 or NS 35/15 mounting rail, can be fitted with Zack strip ZB 8 and ZB 8/27, terminal strip marker KLM 2 and KLM, width: 9.5 mm, color: gray
3001394	D-UKKB 10	Cover, width: 1.5 mm, color: gray
1201413	E/UK 1	End brackets, for supporting the ends of double-level and three-level terminal blocks, width: 10 mm, color: gray
1201028	NS 32 AL UNPERF 2000MM	G rail 32 mm (NS 32)
1201280	NS 32 CU/120QMM UNPERF 2000MM	G-profile DIN rail, deep-drawn, material: Copper, unperforated, height 15 mm, width 32 mm, length 2 m
1201358	NS 32 CU/35QMM UNPERF 2000MM	G-profile DIN rail, material: Copper, unperforated, height 15 mm, width 32 mm, length 2 m
1201002	NS 32 PERF 2000MM	G-profile DIN rail, material: Steel, perforated, height 15 mm, width 32 mm, length 2 m
1201015	NS 32 UNPERF 2000MM	G-profile DIN rail, material: Steel, unperforated, height 15 mm, width 32 mm, length 2 m
0801762	NS 35/ 7,5 CU UNPERF 2000MM	DIN rail, material: Copper, unperforated, height 7.5 mm, width 35 mm, length: 2 m
0801733	NS 35/ 7,5 PERF 2000MM	DIN rail, material: Steel, perforated, height 7.5 mm, width 35 mm, length: 2 m
0801681	NS 35/ 7,5 UNPERF 2000MM	DIN rail, material: Steel, unperforated, height 7.5 mm, width 35 mm, length: 2 m
1201756	NS 35/15 AL UNPERF 2000MM	DIN rail, deep-drawn, high profile, unperforated, 1.5 mm thick, material: Aluminum, height 15 mm, width 35 mm, length 2 m
1201895	NS 35/15 CU UNPERF 2000MM	DIN rail, material: Copper, unperforated, 1.5 mm thick, height 15 mm, width 35 mm, length: 2 m

1201730	NS 35/15 PERF 2000MM	DIN rail, material: Steel, perforated, height 15 mm, width 35 mm, length: 2 m
1201714	NS 35/15 UNPERF 2000MM	DIN rail, material: Steel, unperforated, height 15 mm, width 35 mm, length: 2 m
1201798	NS 35/15-2,3 UNPERF 2000MM	DIN rail, material: Steel, unperforated, 2.3 mm thick, height 15 mm, width 35 mm, length: 2 m
Bridges		
0203153	EB 2-10	Insertion bridge, 2-pos., fully insulated
0203328	EB 3-10	Insertion bridge, 3-pos., fully insulated
0203137	EB 10-10	Insertion bridge, 10-pos., divisible, fully insulated
2303145	EBL 2- 5	Insertion bridge, 2-pos., fully insulated
2303158	EBL 3- 5	Insertion bridge, 3-pos., fully insulated
2303132	EBL 10- 5	Insertion bridge, 10-pos., divisible, fully insulated
0203483	FBI 2-10	Fixed bridge, for cross connections, with screws, screw heads without insulation, 2-pos.
0203276	FBI 10-10	Fixed bridge, 10-pos., screw heads with insulating collar, divisible, with screws
2770642	FBRI 10-5 N	Fixed bridge, for cross connections in the terminal center, with fixed crimped rolls, screw heads with insulating collar as shock protection, 10-pos., divisible
3000434	FBRI 12-5 N	Fixed bridge, for cross connections in the terminal center, with fixed crimped rolls, screw heads with insulating collar as shock protection, 12-pos.
3000476	FBRI 16-5 N	Fixed bridge, for cross connections in the terminal center, with fixed crimped rolls, screw heads with insulating collar as shock protection, 16-pos.
3000515	FBRI 20-5 N	Fixed bridge, for cross connections in the terminal center, with fixed crimped rolls, screw heads with insulating collar as shock protection, 20-pos.
3006823	FBRI 40-5 N	Fixed bridge, for cross connections in the terminal center, with fixed crimped rolls, screw heads with insulating collar as shock protection, 40-pos.
1303337	IS-K 10	Bridge bar isolator, as distance piece
0301521	ISSBI 10-10	Isolator bridge bar, 10-position, divisible, with screws, for switchable branches
0203205	KB- 10	Chain bridge, across any number of terminal blocks, 1-pos., with screw
0203234	SB 2-10/15	Switching bridge, 2-pos.
1413230	SBRN 2-7	Switching bridge, 2-pos.
2303239	USBR 2-7	Switching bridge, 2-pos.
2305538	USBRJ 2-7	Switching bridge, for bridged terminal groups, 2-pos.

Marking

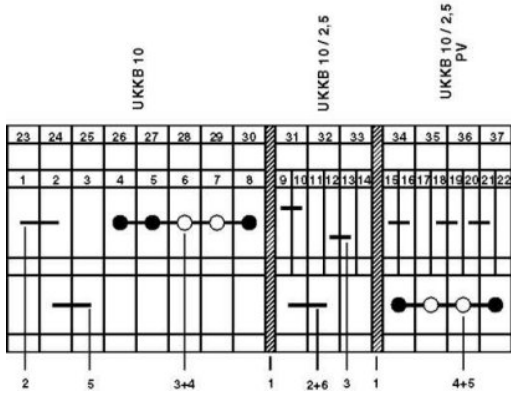
1007248	SBS10:UNBEDRUCKT	Marker cards, unprinted, for individual labeling with the M-PEN, 250-section, perforated, white plastic
1050295	ZB 5:SO/CMS	Zack strip, 10-section, divisible, special printing, marking according to customer requirements
1050525	ZB10:SO/CMS	Zack strip, 10-section, divisible, special printing, marking according to customer requirements

Plug/Adapter

2303543	KSS 5	Short circuit connector, for short circuiting neighboring terminal blocks, can only be used with PSB or PSBJ, 2-pos., pitch: 5.2 mm, color: Black
0310541	KSS 10	Short circuit connector, for short circuiting neighboring terminal blocks, can only be used with PSB or PSBJ, 2-pos., pitch: 10.2 mm, color: Black
0601292	PSB 3/10/4	Test plug socket, not insulated, length: 10 mm, screw thread width: 3 mm, socket width: 4 mm
0303299	PSB 4/7/6	Test plug socket, not insulated, length: 7 mm, screw thread width: 4 mm, socket width: 6 mm
0201304	PSBJ 3/13/4	Test plug socket, insulated, length: 13 mm, screw thread width: 3 mm, socket width: 4 mm, insulation material transparent
0303406	PSBJ 4/15/6 BK	Test plug socket, insulated, length: 15 mm, screw thread width: 4 mm, socket width: 6 mm, insulation material in black
0303354	PSBJ 4/15/6 BU	Test plug socket, insulated, length: 15 mm, screw thread width: 4 mm, socket width: 6 mm, insulation material in blue
0303419	PSBJ 4/15/6 FARBLOS	Test plug socket, insulated, length: 15 mm, screw thread width: 4 mm, socket width: 6 mm, insulation material transparent
0303370	PSBJ 4/15/6 GN	Test plug socket, insulated, length: 15 mm, screw thread width: 4 mm, socket width: 6 mm, insulation material in green
0303396	PSBJ 4/15/6 GY	Test plug socket, insulated, length: 15 mm, screw thread width: 4 mm, socket width: 6 mm, insulation material in gray
0303325	PSBJ 4/15/6 RD	Test plug socket, insulated, length: 15 mm, screw thread width: 4 mm, socket width: 6 mm, insulation material in red
0303383	PSBJ 4/15/6 VT	Test plug socket, insulated, length: 15 mm, screw thread width: 4 mm, socket width: 6 mm, insulation material in violet
0303312	PSBJ 4/15/6 WH	Test plug socket, insulated, length: 15 mm, screw thread width: 4 mm, socket width: 6 mm, insulation material in white
0303367	PSBJ 4/15/6 YE	Test plug socket, insulated, length: 15 mm, screw thread width: 4 mm, socket width: 6 mm, insulation material in yellow
0201647	RPS	Reducing plug, for transition from 4 mm diameter test plug socket, insulation: gray

Drawings

Circuit diagram



- 1 = cover
- 2 = fixed bridge, for cross connections in the terminal center
- 3 = fixed bridge with securely crimped rollers
- 4 = isolator bridge bar
- 5 = bridge bar isolator
- 6 = chain bridge

Address

PHOENIX CONTACT Inc., USA
586 Fulling Mill Road
Middletown, PA 17057, USA
Phone (800) 888-7388
Fax (717) 944-1625
<http://www.phoenixcon.com>



© 2008 Phoenix Contact
Technical modifications reserved;