

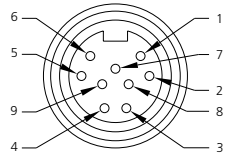
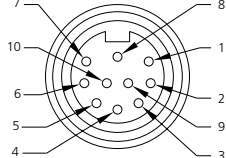
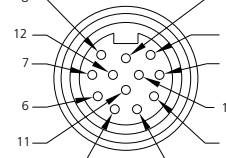


Double-Ended Cordsets

#16 AWG yellow ST00W cable – U.S. color code

Oil-resistant PVC jacket

Low-resistance contact design with gold/palladium nickel plating

	9P	10P	12P
FEMALE FACE VIEW			
COLOR CODE	1- orange 2- blue 3- red-black trace 4- green-black trace 5- white 6- red 7- green-gnd 8- white-black trace 9- black	1- orange 2- blue 3- white-black trace 4- red-black trace 5- green-black trace 6- orange-black trace 7- red 8- green-gnd 9- black 10- white	1- orange 2- blue 3- white-black trace 4- red-black trace 5- green-black trace 6- orange-black trace 7- blue-black trace 8- black-white trace 9- green-gnd 10- red 11- white 12- black
VOLTAGE	600V AC/DC	600V AC/DC	600V AC/DC
CURRENT	7A	7A	5A
CONDUCTOR	#16-9	#16-10	#16-12

FEMALE/MALE	FIG	DOUBLE-ENDED CORDSETS WITH #16 AWG ST00W CABLE 3 FEET LONG		
STRAIGHT/STRAIGHT	1	339020A01F030	331020A01F030	332020A01F030
90°/STRAIGHT	2	339021A01F030	331021A01F030	332021A01F030
STRAIGHT/90°	3	339022A01F030	331022A01F030	332022A01F030
90°/90°	4	339023A01F030	331023A01F030	332023A01F030

CATALOG OPTIONS

Use the following chart to modify your part's specifications

339020A01F0301

CABLE LENGTH

6'	060
12'	120
20'	200

COUPLING NUT

STAINLESS STEEL	ADD 1
---------------------------	-------

Specifications



MECHANICAL	
CONNECTOR FACE:	PVC - UL STD 94 - V0
MOLDED BODY:	PVC - UL STD 94 - V0
COUPLING NUT:	ZINC DIECAST W/ BLACK EPOXY COAT, OPTIONAL STAINLESS STEEL TYPE 303
CABLE:	YELLOW, #16 AWG, PVC JACKET & PVC CONDUCTOR INSULATION OVER 65 X #34 COPPER STRANDING, 600V, UL STYLE ST00W CSA ST
OUTSIDE DIAMETER:	9P - .64" (16.3mm) 10P - .66" (16.8mm) 12P - .71" (18.0mm)
ELECTRICAL	
VOLTAGE RATING:	600 V AC/DC
AMPERAGE:	9P - 7A 10P - 7A 12P - 5A
ENVIRONMENTAL	
PROTECTION:	IP 68, NEMA 6P
AMBIENT OPERATING TEMP:	-4° to 221° F (-20° to 105° C)
CERTIFICATIONS	
UL:	UL RECOGNIZED, FILE NO. E46237
CSA:	CSA CERTIFIED, FILE NO. LR6837

CONNECTOR DIMENSIONS

FEMALE STRAIGHT/MALE STRAIGHT

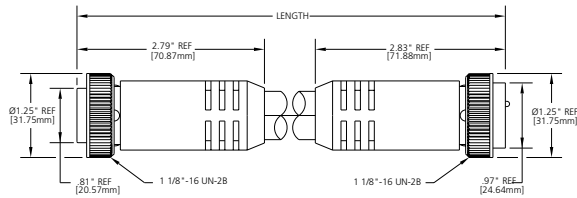


FIG 1

FEMALE 90°/MALE STRAIGHT

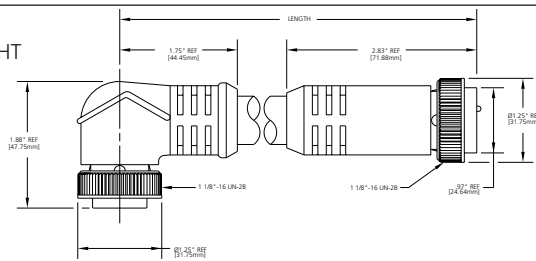


FIG 2

FEMALE STRAIGHT/MALE 90°

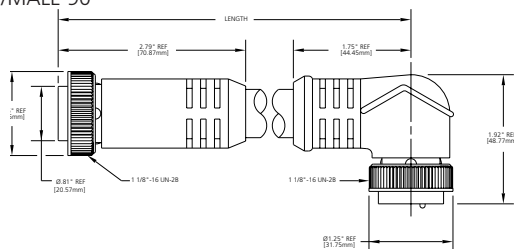


FIG 3

FEMALE 90°/MALE 90°

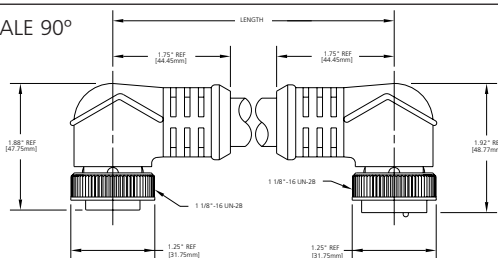


FIG 4

MALE FACE VIEW

