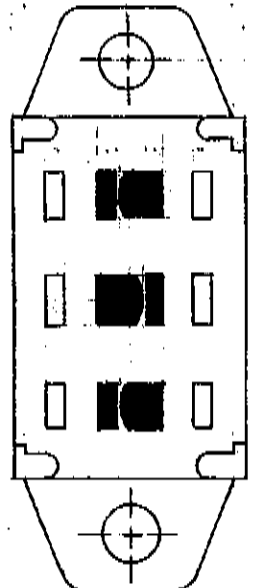


BOTTOM VIEW



⑤

ALL SCREW THREADS TO BE CLASS 2 FIT (AMERICAN STANDARDS) UNLESS OTHERWISE SPECIFIED. DIMENSIONS ARE IN INCHES, AND INCLUDE THICKNESS OF PLATING. DO NOT SCALE DRAWING.

REVISIONS	0	1	2	3	4	5	6	7	8	9
ENG. AP.	2-11-65	ADDED .350 ±.015 WAS .703 ±.015	350 WAS IMPROVED DIM. 1-5-66	WAS .705 ±.015 ADD. .218 TRAVEL	±.010 WAS ±.020 P.S. 3-12-70	ADDED BOTTOM VIEW P.S. 4-7-70 J.M.V.	GF-124-0001 WAS GF-124-PC P.S. 6-7-70	ADD. .285 ±.015 TRAVEL P.S. 1-8-73 .349 WAS .352	.704 (REF.) WAS .704 ±.020 ADDED .219 ±.010 .050 U.V. 7-26-73	GF-124-0015 WAS GF-124-0001 3-22-78
									JUL 30 1970	MAR 27 1978

PDF File Made	VARIATIONS ON FINISHED DIMENSIONS UNLESS OTHERWISE MARKED		
	BASIC DIMENSIONS	FRACTIONAL DIMENSIONS	DECIMAL DIMENSIONS
	UP TO 6	± 1/16	± .005
	ABOVE 6 TO 24	± 1/32	± .010
ABOVE 24	± 1/64	± .015	
ANGULAR DIMENSIONS			± 1/2°

SWIDGET
 S.P.-D.T.
 FIRST MADE FOR CU
 DRAWN BY V.V.B. 2-9-65
 CHECKED BY [Signature]
 Continental-Wirt Electronics Corp. GF-124-0015

A GF-124-0015