

PART NAME PLEXIGLASS DOOR - 19" PANEL SPACE

PART No. V-9060-A TO V-9070-A
V-9060-L TO V-9070-L

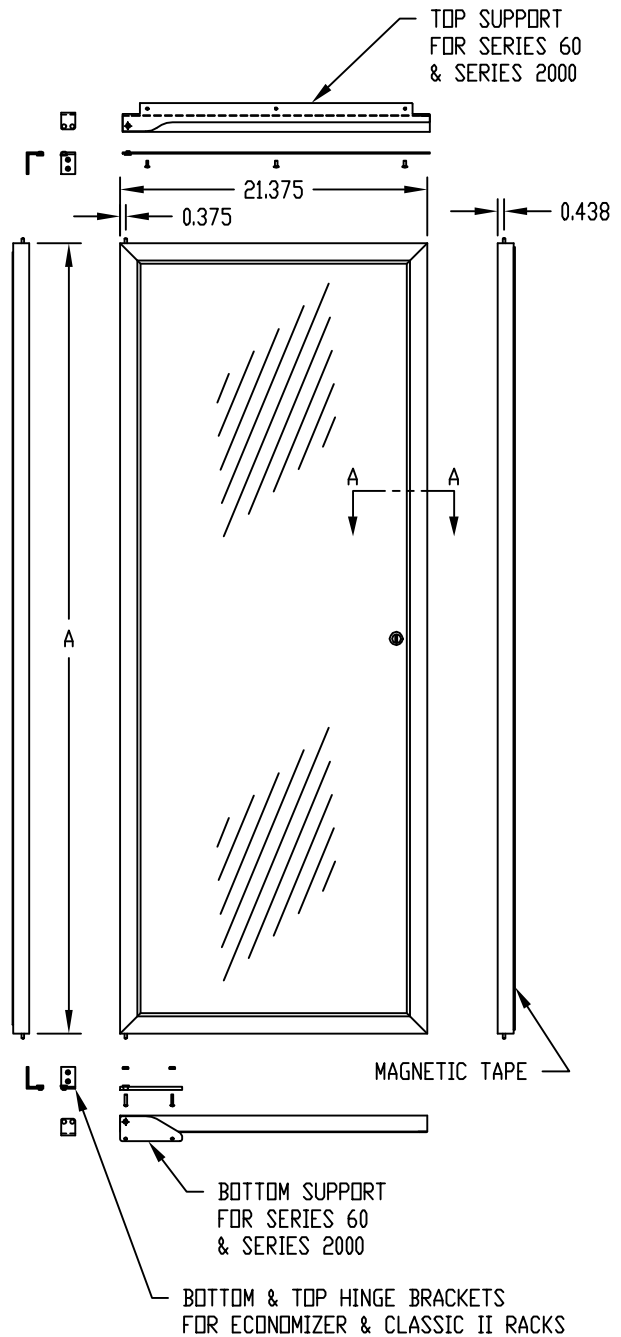
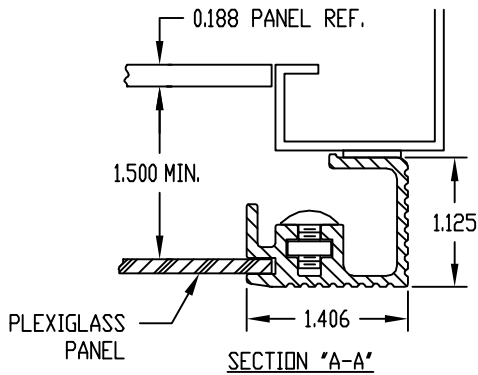
MATERIAL:

VERTICAL & HORIZONTAL EXTRUSIONS — 6063-T5 ALUMINUM ALLOY
 TOP SUPPORT _____ 0.120 THK. ALUMINUM
 BOTTOM SUPPORT _____ 0.190 THK. ALUMINUM
 PLEXIGLASS PANEL _____ 0.125 THICK
 MAGNETIC TAPE _____ PLASTIFORM, SELF-ADHESIVE
 HINGE PIN _____ STAINLESS STEEL
 HINGE HOUSING _____ STEEL
 REST BUSHING _____ NYLON
 HINGE BRACKETS _____ 12 GA. STEEL
 STRIKERS _____ 1/8" THK. STAINLESS STEEL

FINISH:

VERTICAL & HORIZONTAL EXTRUSIONS _____ SILVER POWDER
 TOP & BOTTOM SUPPORTS, HINGE BRACKETS _____ METALLIC GRAY
 PLEXIGLASS PANEL _____ SMOKE GRAY
 STRIKERS _____ NATURAL
 REST BUSHING _____ WHITE

- DOOR - MAY BE HINGED LEFT OR RIGHT
 - CLEARS PANEL SPACE WHEN OPENED 90° OR MORE
 - IS HELD CLOSED WITH MAGNETIC TAPE
 - CAN EASILY BE REMOVED OR INSTALLED THROUGH USE OF SPRING PIN HINGES
 - FITS SERIES 60, SERIES 2000, CLASSIC II, & ECONOMIZER RACKS



PART NO. NON-LOCKING	PART NO. LOCKING	HEIGHT A	RACK VERTICAL PANEL SPACE
V-9060-A	V-9060-L	23.500	21.000
V-9061-A	V-9061-L	34.000	31.500
V-9062-A	V-9062-L	37.500	35.000
V-9063-A	V-9063-L	44.500	42.000
V-9064-A	V-9064-L	55.000	52.500
V-9065-A	V-9065-L	63.750	61.250
V-9066-A	V-9066-L	72.500	70.000
V-9067-A	V-9067-L	81.250	78.750
V-9068-A	V-9068-L	32.250	29.750
V-9069-A	V-9069-L	27.000	24.500
V-9070-A	V-9070-L	25.250	22.750