

Dino-Lite Handheld Digital Microscope

AM-311

User's Manual

Thank you for choosing Dino-Lite Handheld Digital Microscope!

Dino-Lite Handheld Digital Microscope has a wide scope of applications, such as,

1. Skin Check
2. Scalp Check
3. Industrial Inspection e.g. Printing Circuit Board(PCB)inspection, electronics device inspection
4. Visual Assistance
5. Printing Inspection
6. Textile Inspection
7. Jewelry Inspection
8. Science Learning
9. etc.

Please read this manual carefully before using Dino-Lite Handheld Digital Microscope.

Contents

Product Specifications.....	3
Safety Precautions	3
Contents and Name of Parts	4
Connecting to PC	4
System Requirements.....	5
Driver Installation Procedure.....	5
Windows XP	6
Windows 2000	10
Windows 98se	13
Connecting Procedure.....	19
Operate Dino-Lite Handheld Digital Microscope	19
DinoCapture Application Software.....	20
Picture / Video Folder	21
Menu Function List.....	25
Open The Picture	28
The opened picture can be displayed in full screen by clicking	28
To return from full screen mode, just click the mouse left key.	28
.....	28
Open The Video Or Time Lapsed Video.....	29
Q&A.....	30
Copyright.....	31
Certification	31
Limited Liability	31

Product Specifications

1. Resolution : 640*480 VGA.
2. Built-in 1 optical lens.
3. Magnification power : 10x~200x.
4. Built-in LED light.
5. Frame rate : up to 30 FPS
6. Interface : USB (PC)

Remarks: The magnification power is the ratio of the real size of the an observe object vs. the image show on a 15" monitor

Safety Precautions



1. Avoid touching the lens with finger to protect the product from electrostatic damage.
2. Do not attempt to service this product yourself. Opening the covers may expose you to dangerous voltage points or other risks.
3. When hands are wet, do not plug in or remove the adaptor or other connectors.
4. Using or storing Dino-Lite Handheld Digital Microscope, do not plug in any other cables, not belong to Dino Digital Microscope.
5. Do not use any detergent or volatile solution, which will damage the camera case, painted surfaces & lens. Only use a soft cleaning cloth.
6. If the lens is dirty, please use a lens brush on soft cloth to wipe clean. Avoid touching them with your fingers. Exercise care to avoid scratching the lens.
7. Without protection, do not put Dino Digital Microscope outdoor to avoid the lens damaged by high temperature or humidity.
8. Using and storing Dino Digital Microscope at Temp: 0°C~ 40°C, Humidity: 45%~85%.
9. If water has entered Dino Digital Microscope device and the inspection stage, immediately turn the power off and remove the USB cable. Do not use dryer neither.
10. Using or storing Dino-Lite Handheld Digital Microscope, need to watch all cables to avoid trip over or Dino-Lite Handheld Microscope fall down.
11. To avoid electric shock, remove all electricity source before moving PC or

TV.

Contents and Name of Parts

1. Dino-Lite Handheld Digital Microscope Device
2. CD (user's manual included)
3. USB Cable 《USB2.0 / 1.1》 (1.8m)
4. Dock



Connecting to PC



System Requirements

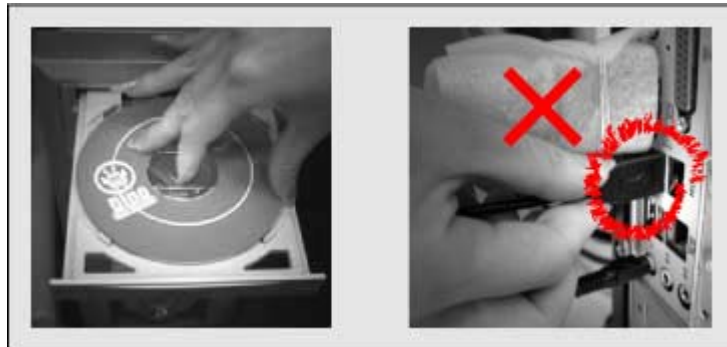
- PC's system requirements:
 - ✓ OS: Windows 98se, 2000, XP
 - ✓ CPU: Pentium IV 1.5G, Celeron, AMD Athlon or above
 - ✓ Memory: 128MB
 - ✓ HDD storage space: at least 150MB

(for driver and application software installation)

- ✓ Graphic card: 16-bit or above
- ✓ CD-ROM driver
- ✓ USB2.0 / 1.1 port

Driver Installation Procedure

- Power on PC and place installation CD into CD-ROM driver, do not connect USB Cable from Dino-Lite Handheld Digital Microscope to PC before driver installation.



- Select driver installation, and follow the instructions to complete installation.
- As driver installation completed, and if system asking for re-start, please re-start the Windows OS.

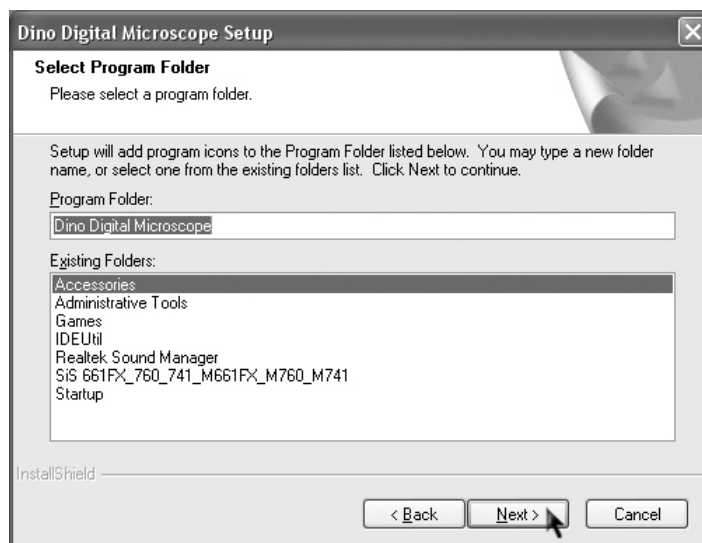
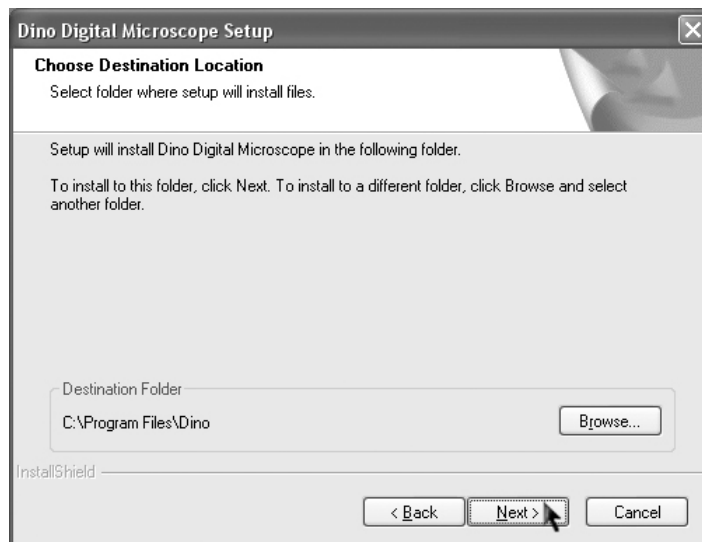
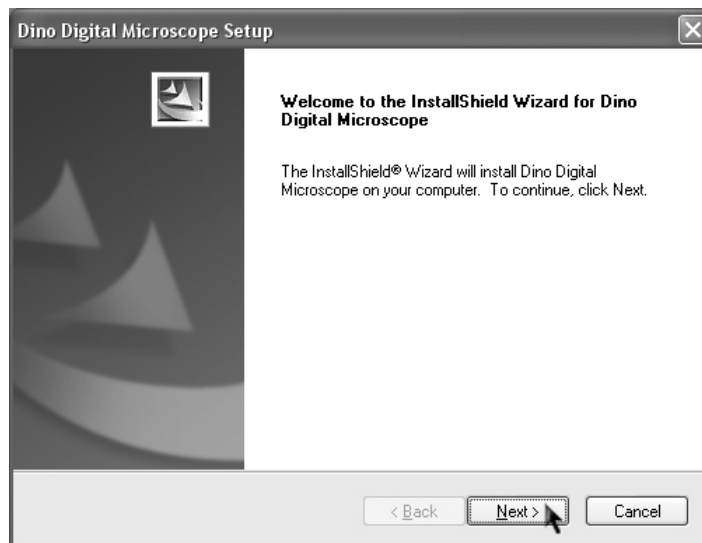
Note: The driver needs to be installed only once for each computer.

Windows XP

1. Place the installation CD into CD-ROM driver, the installation program should be started automatically. Otherwise, please execute the AUTORUN.EXE directly from the CD.
2. Select "Driver Installation" from Dino-Lite Handheld digital Microscope Installation menu screen as shown.



3. Click "Next" to continue, as shown.

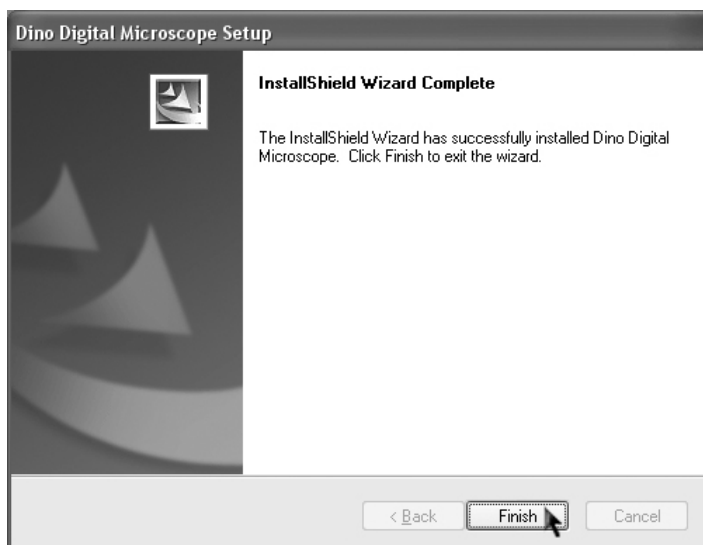




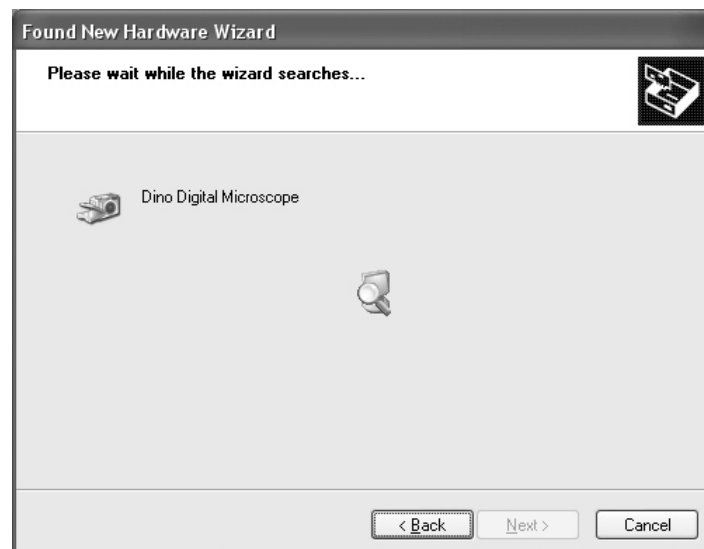
4. When the "Software Installation" warning message appears, click "Continue Anyway".

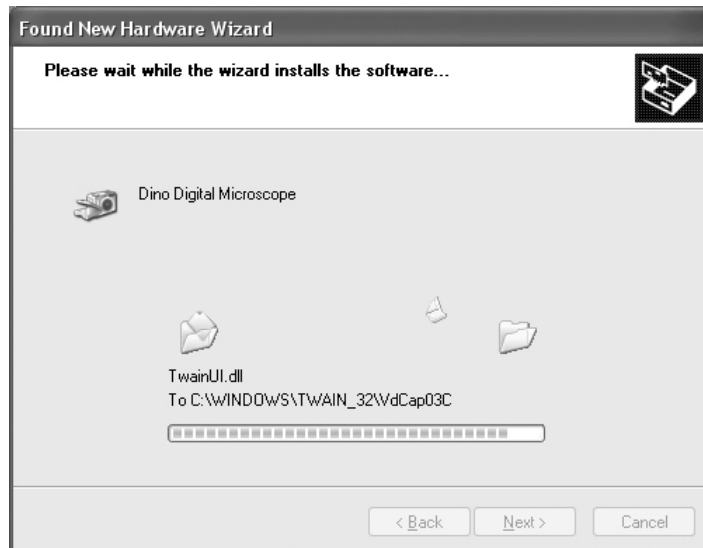


5. Click "Finish" to complete the installation.



6. Plug USB Cable to Dino-Lite Handheld Digital Microscope to connect with PC, a "Found New Hardware Wizard" will then appear. Click "Next" to continue.



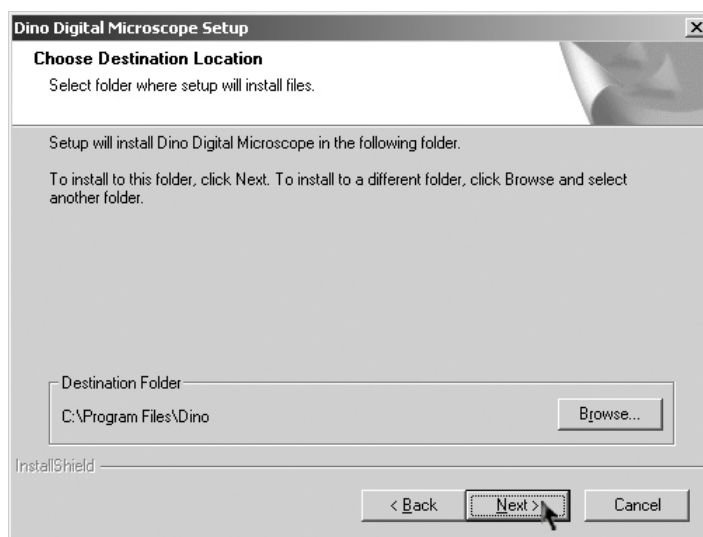
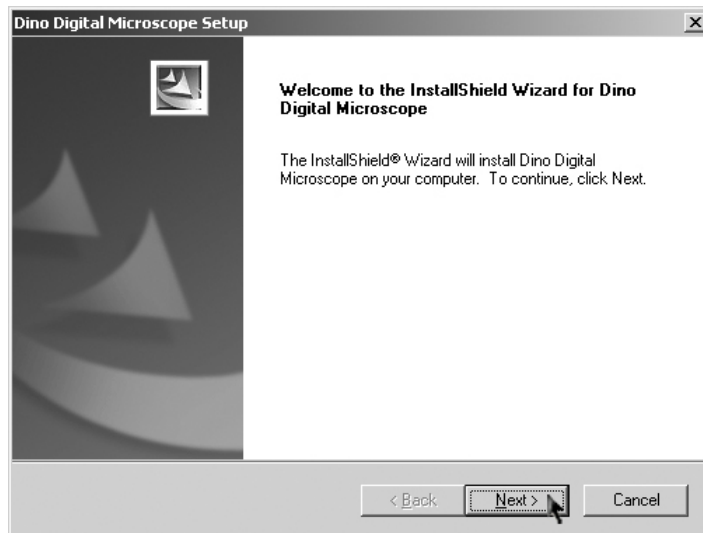


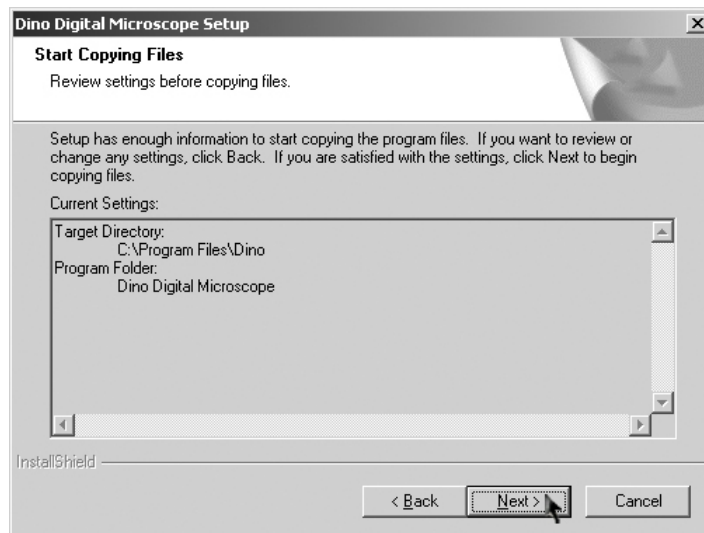
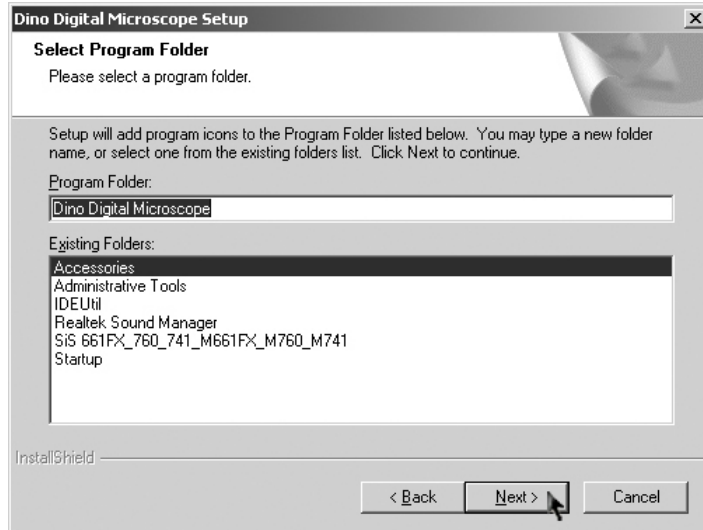
Windows 2000

1. Place the installation CD into CD-ROM driver, the installation program should be started automatically. Otherwise, please execute the AUTORUN.EXE directly from the CD.
2. Select "Driver Installation" from Dino-Lite Handheld digital Microscope Installation menu screen as shown.



3. Click "Next" to continue, as shown.

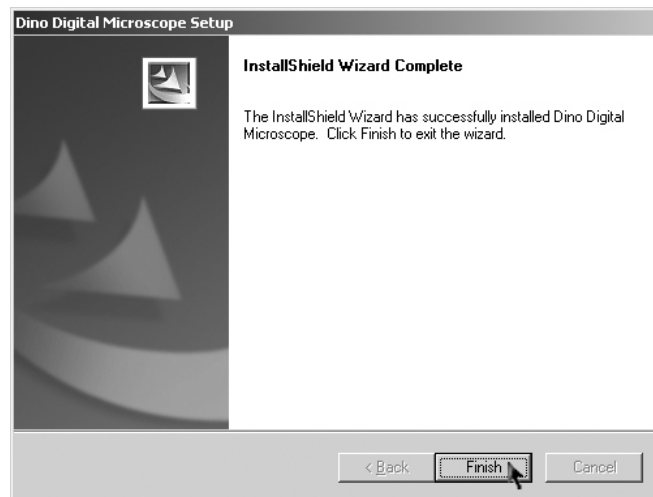




4. When the "Digital Signature Not Found" warning message appears, click "Yes" to continue the installation.



5. Click "Finish" to complete the installation.



6. Plug USB Cable to Dino-Lite Handheld Digital Microscope to connect with PC

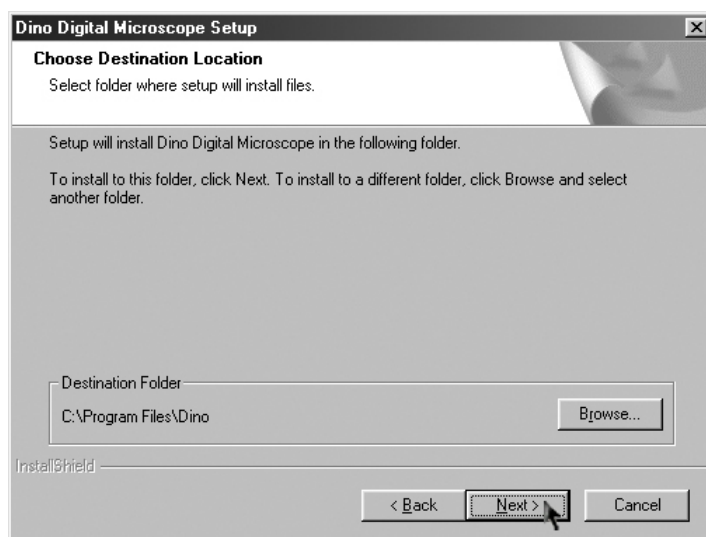
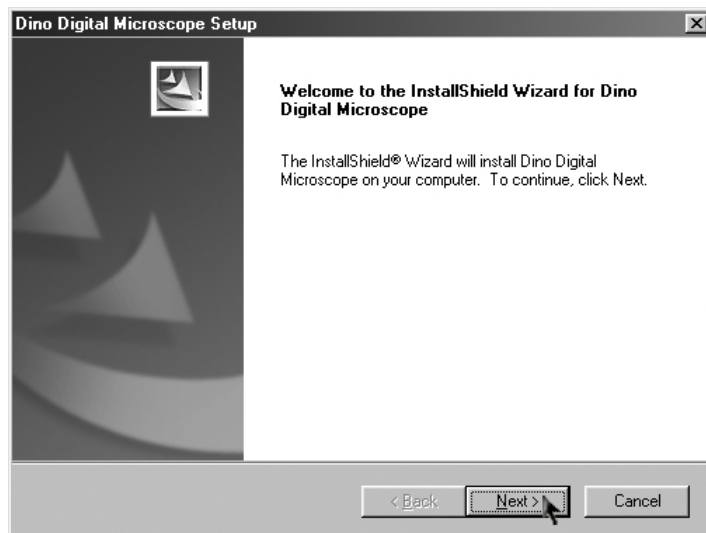


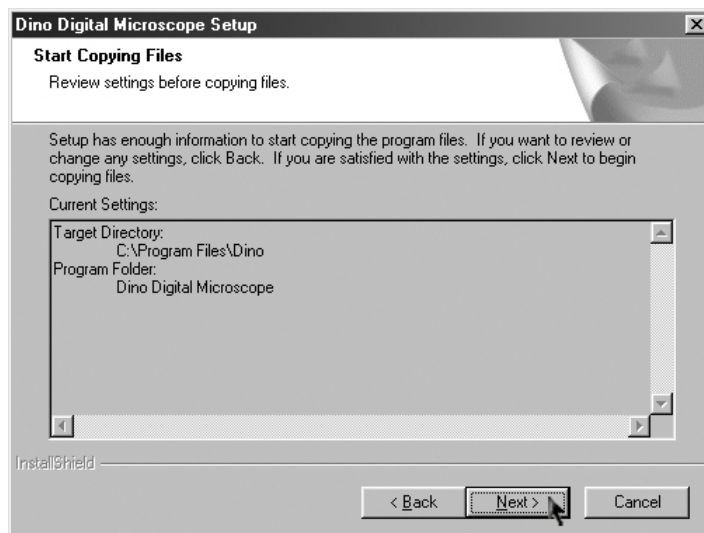
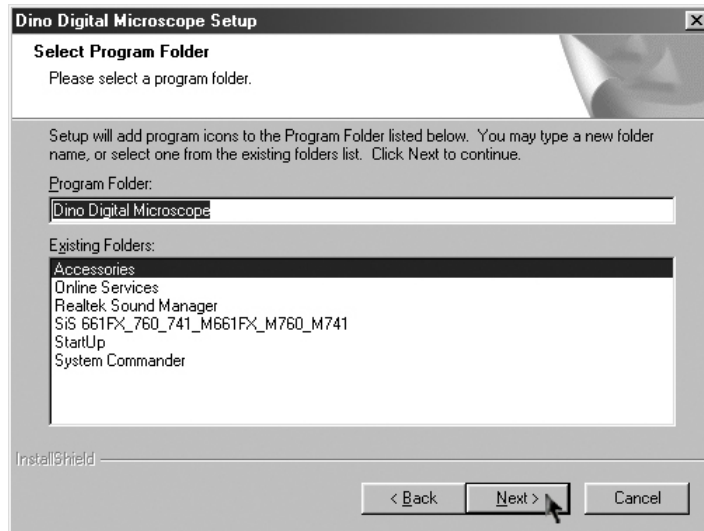
Windows 98se

1. Place the installation CD into CD-ROM driver, the installation program should be started automatically. Otherwise, please execute the AUTORUN.EXE directly from the CD.
2. Select "Driver Installation" from Dino-Lite Handheld digital Microscope Installation menu screen as shown.

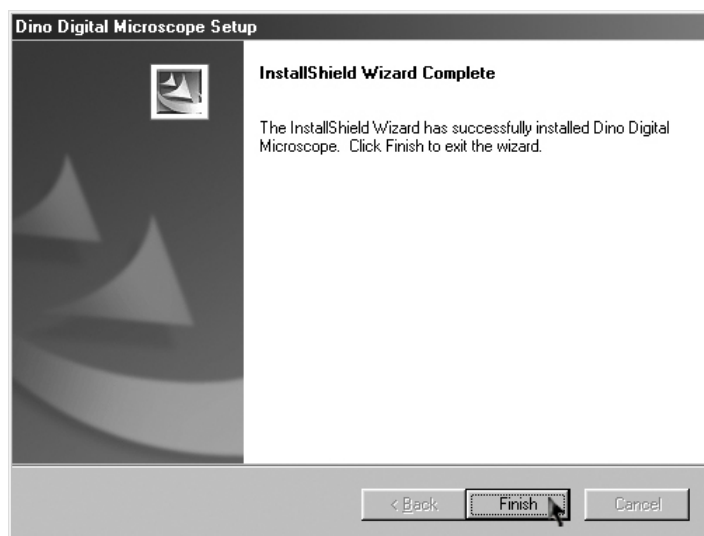


3. Click "Next" to continue, as shown.



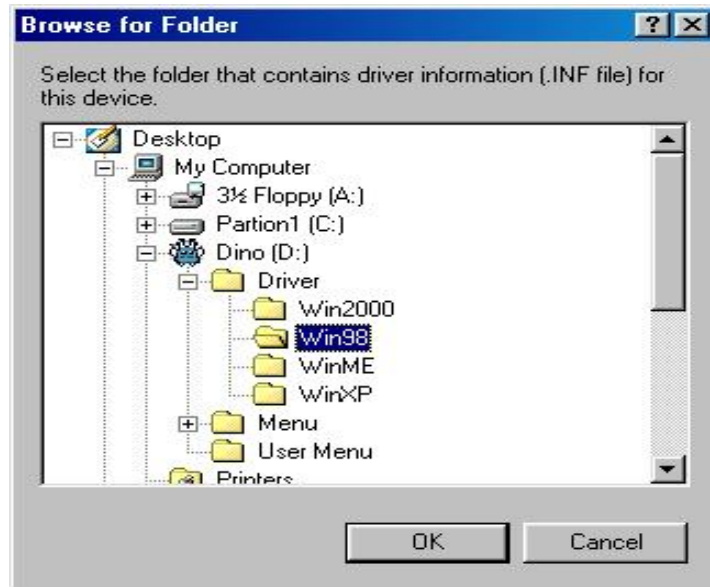


4. Click "Finish" to complete the installation.

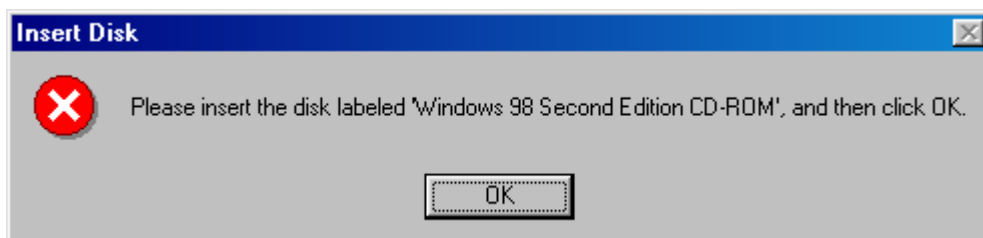


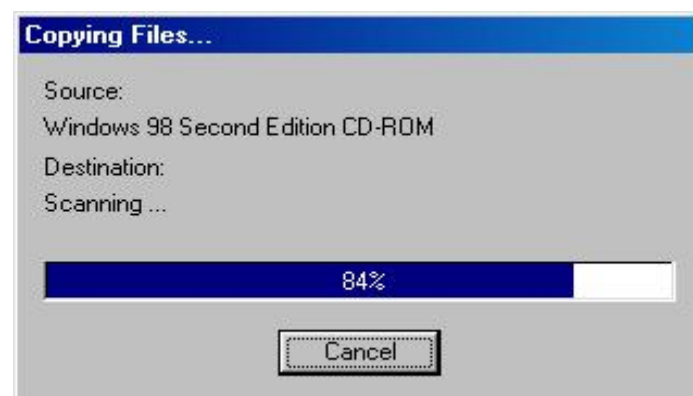
5. Plug USB Cable to Dino-Lite Handheld Digital Microscope to connect with PC





6. When the following message appears, please insert the Windows 98 Second Edition CD-ROM.







Connecting Procedure

The following procedure will show you how to properly connect Dino-Lite Handheld Digital Microscope with your PC.

Connect USB Cable on Microscope Device to PC USB port.



Operate Dino-Lite Handheld Digital Microscope

The following procedure will show you how to operate Dino Digital Microscope.

1. To have up-right image, suggest placing Dino-Lite Handheld Digital Microscope as shown.
2. Put the to-be-observed object near the Dino-Lite Handheld Digital Microscope.



3. Adjust the focus: Use the thumb to rotate the area A as shown.



4. The magnification power will be higher if Dino-Lite Handheld Digital Microscope is closer to the observed object.
Remark: Can also use Video Setting function of DinoCapture for image adjustment. (Please refer to page 25)
5. When the object is located at the top of the front cap, there are two focus positions, each with different magnification power, can be found by rotating the focus knob.

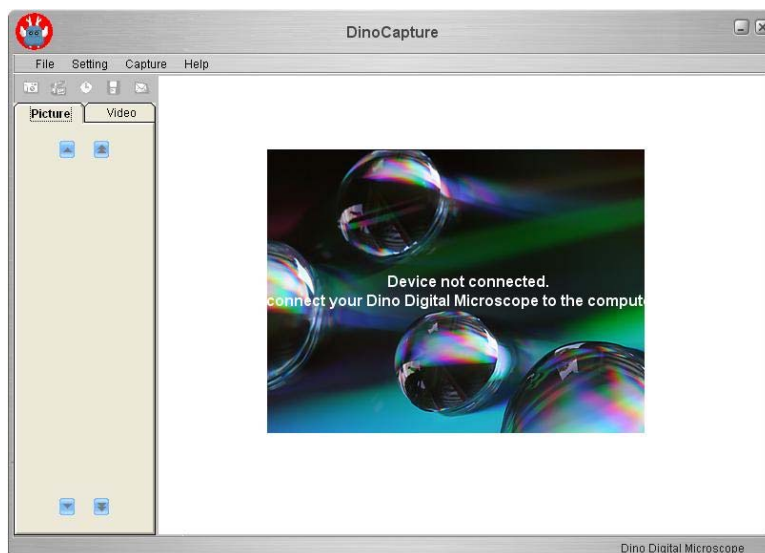
DinoCapture Application Software

Note: Before start DinoCapture, please make sure Dino-Lite Handheld Digital Microscope has been connected to PC via USB.





Click DinoCapture, the DinoCapture main screen will be shown as below.



The right hand side display the real-time image under the microscope. If Dino-Lite Handheld Digital Microscope has not been found while opening the DinoCapture, the message will be prompted as below.



Tool Bar Description

-  Take Picture
-  Take Video
-  Take Time Lapsed Video
-  Save as



Mail

Picture / Video Folder

Picture / Video folder is on the left side of the program, which contains the thumbnails of picture or video captured by the program.

The file in the folder will not be automatically deleted when leaving the program. But it is still suggested to save the picture or video and keep the folder clean for file security and program's performance concern.

Thumbnail Notation

Grey shadow -- The picture or video has not yet been saved.



Orange shadow -- The picture or video has been saved.




Blue frame -- The picture or video is selected.

The selected picture or video can thus be opened, be saved, be copied , be shared, be mailed or be deleted.




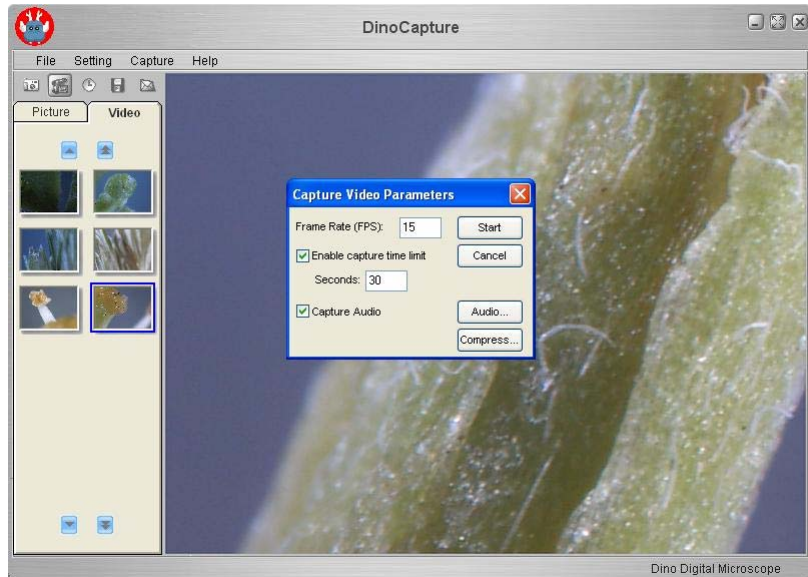
Take Picture

The picture can be taken either by clicking the  icon on Tool Bar or by selecting "Picture" under Capture Menu.




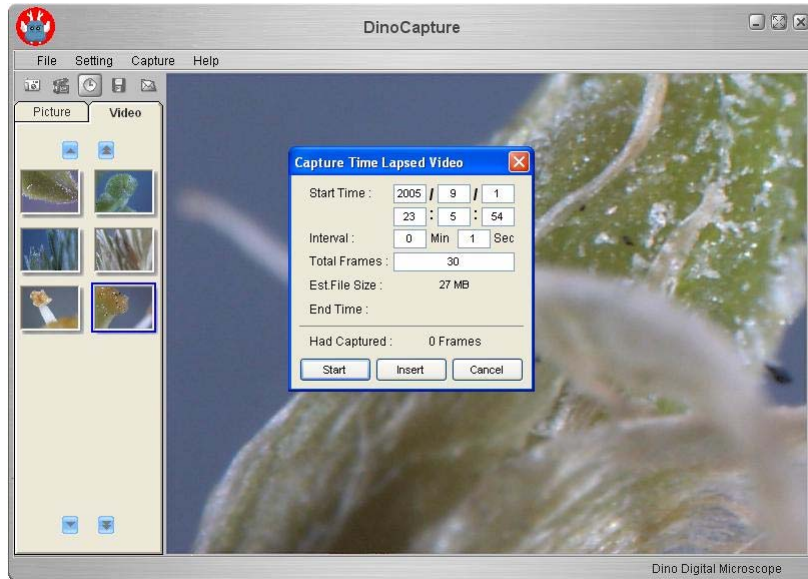
Take Video

The Video can be taken either by clicking the  icon on Tool Bar or by selecting "Video" under Capture Menu.




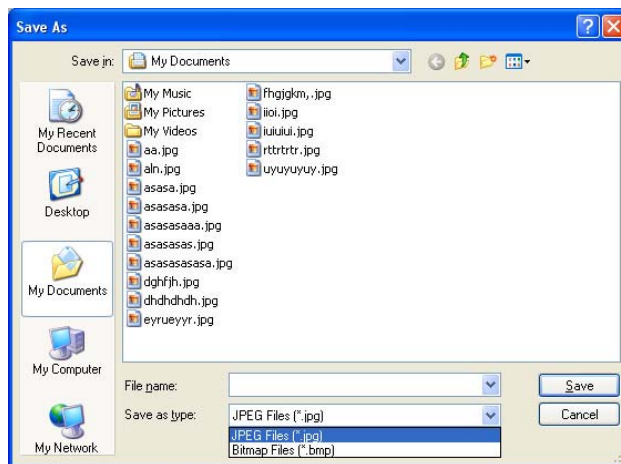
Take Time Lapsed Video

The Time Lapsed Video can be taken either by clicking the  icon on Tool Bar or by selecting "Frames" under Capture Menu.




Save Picture or Video

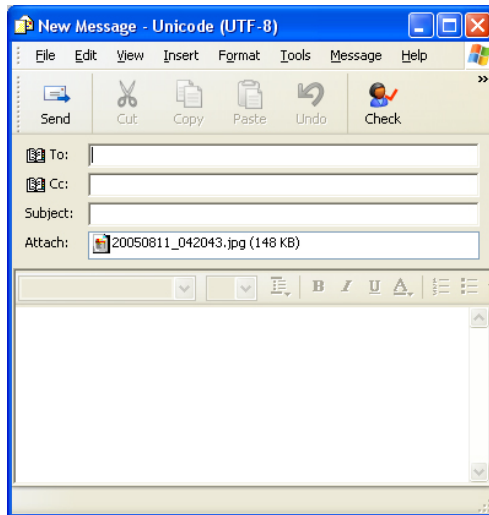
The file can be saved as "jpg" or "bmp", by either clicking  in the Tool Bar or by selecting "Save as" under the File Menu . The selected file in the folder will then be saved as prompted below.



Mail

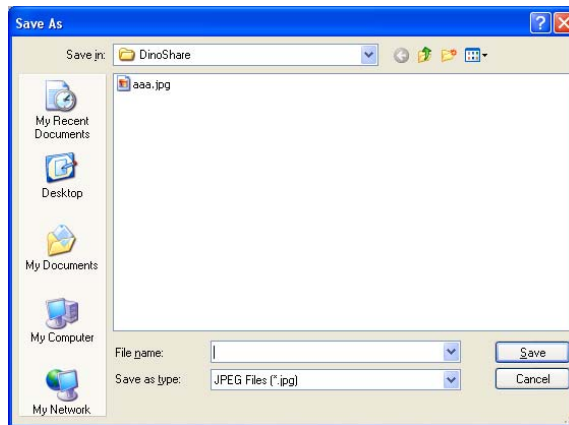
Click "Mail" : The file name is same as system's.

The selected file can be mailed by clicking  in the Tool Bar, or by selecting "Mail" under the File Menu.




Share

Click "share" in the File Menu.



Full Screen Display:

The real time display can be enlarged to full screen by clicking  on the upper right corner of the window.

To return from full screen mode, please click "Esc".

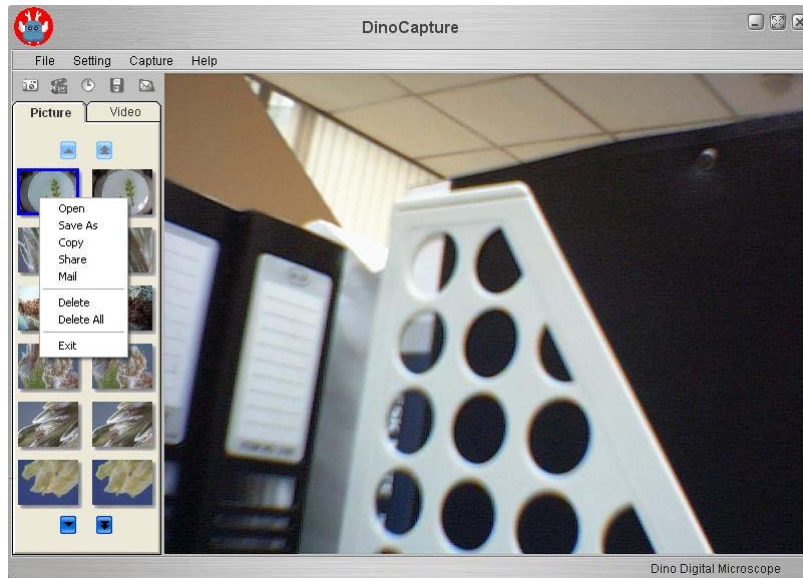
Menu Function List

1. File Menu

- Open -- To open the selected picture or video.
- Save As -- To save the selected picture or video.
- Share -- Save the picture or video file to DinoShare folder, under the Shared Document.
- Mail -- To mail the selected picture or video.
The picture will be mailed in JPG format automatically.
- Delete -- To delete the selected picture or video.

Delete All – To delete all the files in selected folder, picture or video.

On display thumbnail picture, click mouse right key, the functions showed are same as file's.

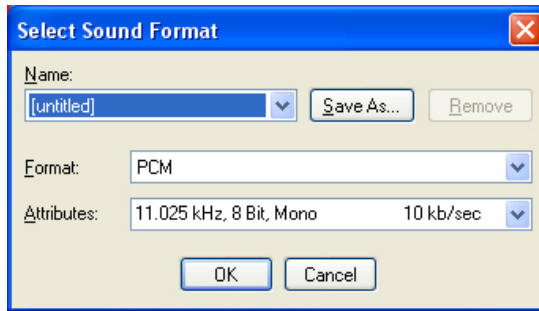


2. Setting



Audio Setting

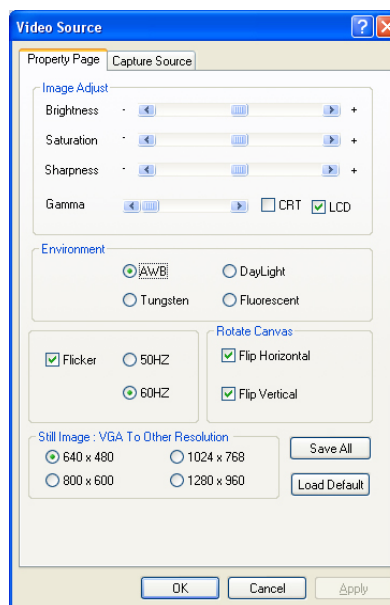
The user can select the quality of audio file to be recorded.



Video Setting

The user can set the parameter of video.

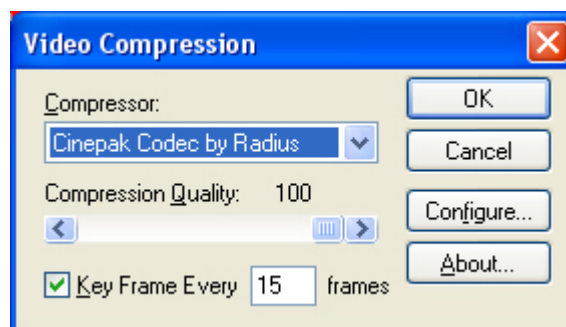
Note: The resolution setting is not useful.



Video Compression Setting

The user can select the compressor for video recording.

Note: The video quality may be varied with different compressor.



Video Thumbnail Auto-play

The thumbnail auto play can be switched on or Off. If thumbnail auto play is enabled, the video will play when cursor move over.

3. Capture

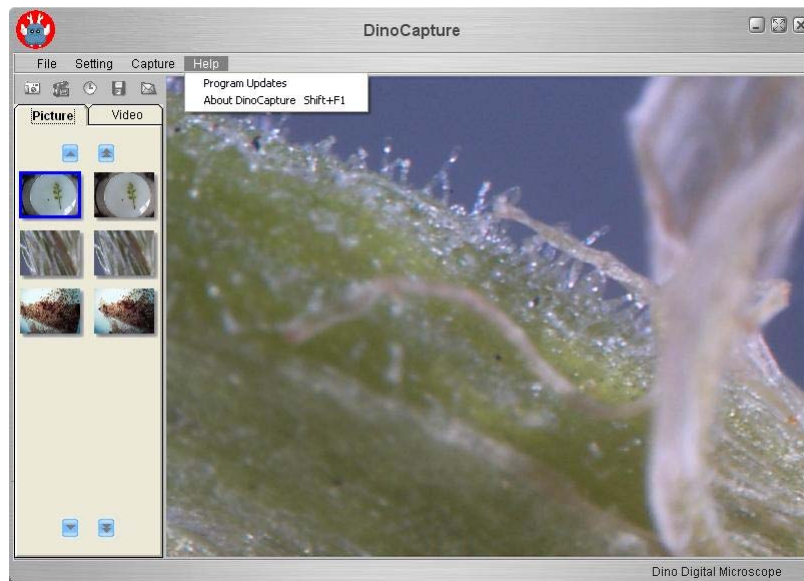
The picture, video and frame functions in Capture have the same

functions as the buttons of  in the Tool Bar.




4. Help

User can use "Program Updates" in Help to download the most updated DinoCapture from AnMo web site www.anmo.com.tw



Open The Picture

The opened picture can be displayed in full screen by clicking 
 To return from full screen mode, just click the mouse left key.



Function Description

 Save as

 Copy

 Mail



Previous Picture



Next Picture



Share the Picture by sending the file to DinoShare under the Shared Document

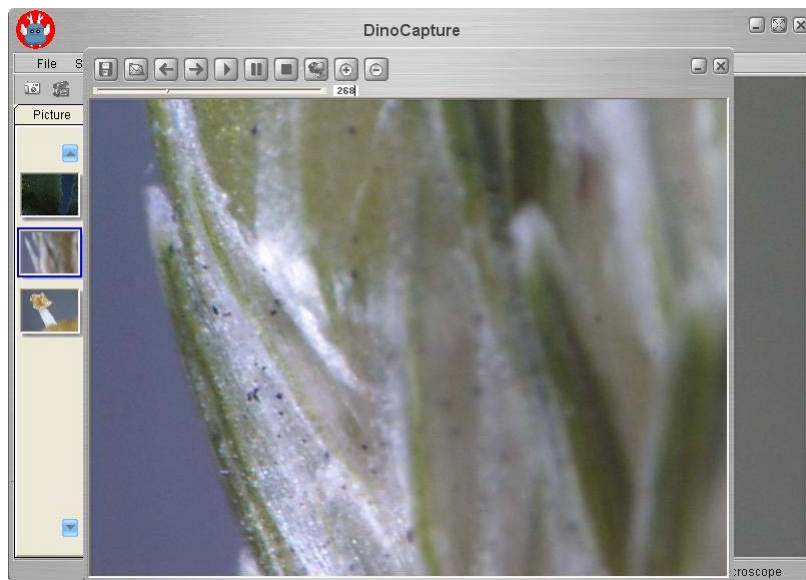


Enlarge



Shrinkage

Open The Video Or Time Lapsed Video



Function Description



Play



Stop



Pause

Q&A

Q1. Why the object cannot be found on the display of digital microscope?

A: a. Please check all the connection of all necessary cable and adapter.

Q2. Why cannot work, when connect to PC?

- A:
- a. Check driver installation is completed.
 - b. The USB cable is connected to Dino-Lite Handheld Microscope and PC USB port.

Q3. How to install driver?

- A:
- a. Do not connect USB cable to Dino-Lite Handheld Microscope before driver installation.
 - b. Place installation CD into CD-Rom driver, select "driver installation".

Q4. If USB cable connected to Dino-Lite Handheld Digital Microscope before driver installation?

- A: Remove USB cable from Dino-Lite Handheld Digital Microscope for 5 sec., and then plug it back to Dino-Lite Handheld Digital Microscope.

Q5. How to connect "DinoCapture" ?

- A: Complete driver installation, connect USB cable to Dino-Lite Handheld Digital Microscope, and then Execute "DinoCapture" application procedure.

Q6. How to uninstall driver ?

- A: Remove USB cable from Dino-Lite Handheld Digital Microscope, execute "uninstall" in application procedure "Dino Digital Microscope".

Q7. When connecting to PC, why the picture is slow or unsmooth?

- A:
- a. Probably your PC's configuration is not sufficient enough. Please check the system requirements as mentioned in this User's Manual.
 - b. Probably your PC's CPU or memory is overloaded by executing too many application software. Try to shut down other application and restart your system to release the memory.
 - c. Probably your system has being attacked by virus, which may dramatically degrade your system's performance.

Q8. What should we do, if Dino-Lite Handheld Digital Microscope is not working normally?

- A: Please reset the system by disconnecting all the cables from Dino-Lite Handheld Digital Microscope. Wait for about 5 sec., re-connecting the cables to restart.

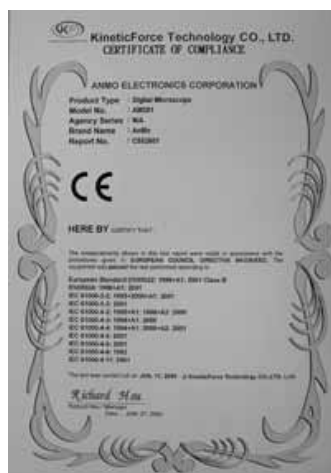
Copyright

intellectual rights regarding the user manual. Copying the manual in part or in full without the written permission of AnMo Electronics Corp. is prohibited. Illegal usage of part or all of the document may result in criminal penalty.

Windows 98se, Windows 2000 and Windows XP are Microsoft company's trademark.

Certification

CE, FCC



Limited Liability

The manufacturer, importer, and the dealer cannot be held responsible for accidental damage, including personal injury or any other damage, due to inappropriate usage of the product.

Information in the user manual is written for the current specification of the product.

The manufacturer of Dino Digital Microscope continues to provide additional functions and apply new technology to it. All specifications may be changed without notice to individual users.