

Coaxial Amplifier

ZHL-1000-3W

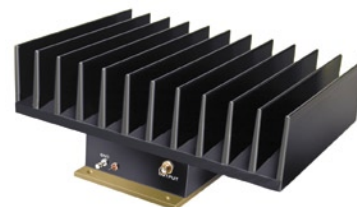
50Ω High Power 500 to 1000 MHz

Features

- wideband, 500 to 1000 MHz
- high power output, +35 dBm min.
- high gain, 38 dB min.
- high IP3, +45 dBm typ.
- protected by US Patent, 6,943,629

Applications

- VHF
- cellular
- instrumentation
- laboratory



CASE STYLE: DDD338

Connectors	Model	Price	Qty.
SMA	ZHL-1000-3W	\$695.00	(1-9)

Amplifier Electrical Specifications

MODEL NO.	FREQUENCY (MHz)		GAIN (dB)		MAXIMUM POWER (dBm)		DYNAMIC RANGE		VSWR (:1)		DC POWER	
	f_L	f_U	Min.	Flatness Max.	Output (1 dB Compr. min.)	Input (no damage)	NF (dB) Typ.	IP3 (dBm) Typ.	In	Out	Volt (V) Nom.	Current (A) Max.
ZHL-1000-3W	500	1000	38	±1.0*	+35**	0	9	+45	2.0	2.5	24	2.25

* 1.5 dB over temperature range -20°C to +65°C

** +37 dBm typical.

Open load is not recommended, potentially can cause damage.
With no load derate max input power by 20 dB

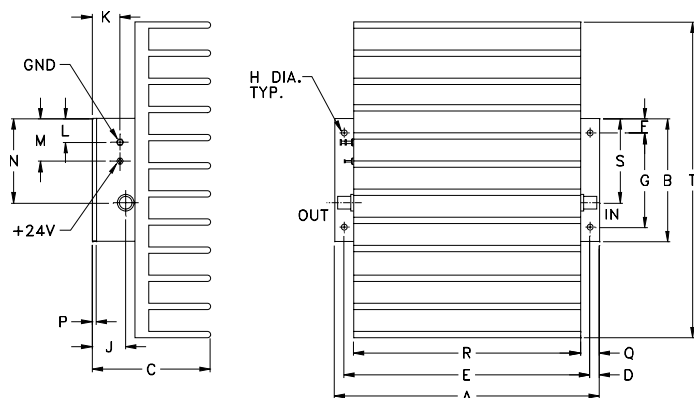
Maximum Ratings

Operating Temperature -20°C to 65°C

Storage Temperature -55°C to 100°C

DC Voltage +25V Max.

Outline Drawing



Outline Dimensions (inch/mm)

A	B	C	D	E	F	G	H	J	K
7.00	3.25	3.13	.25	6.500	.38	2.500	.156	.88	.73
177.80	82.55	79.50	6.35	165.10	9.65	63.50	3.96	22.35	18.54
L	M	N	P	Q	R	S	T		wt
.62	1.13	2.23	.125	.50	6.00	2.23	8.35		grams
15.75	28.70	56.64	3.18	12.70	152.40	56.64	212.09		1884



INTERNET <http://www.minicircuits.com>

P.O. Box 350166, Brooklyn, New York 11235-0003 (718) 934-4500 Fax (718) 332-4661

Distribution Centers NORTH AMERICA 800-654-7949 • 417-335-5935 • Fax 417-335-5945 • EUROPE 44-1252-832600 • Fax 44-1252-837010

Mini-Circuits ISO 9001 & ISO 14001 Certified

REV. B
M98142
ZHL-1000-3W
051229
Page 1 of 2

FREQUENCY (MHz)	GAIN (dB)			DIRECTIVITY (dB)			VSWR (:1)		NOISE FIGURE (dB)	POUT at 1 dB COMPR. (dBm)
	23V	24V	24.5V	23V	24V	24.5V	IN	OUT	24V	24V
500.00	43.81	44.09	44.26	30.30	32.40	45.80	1.15	2.02	10.53	36.49
534.30	44.69	44.96	45.11	30.30	27.90	35.30	1.15	1.88	10.15	36.58
583.80	45.04	45.27	45.42	33.10	30.70	30.90	1.17	2.00	8.99	36.32
637.80	45.04	45.26	45.38	45.20	32.70	33.60	1.19	1.93	8.55	36.64
692.30	44.13	44.30	44.40	33.60	27.60	26.10	1.21	1.65	8.42	37.12
743.60	43.70	43.83	43.90	37.80	42.10	30.90	1.20	1.49	8.78	37.28
807.70	45.51	45.62	45.68	28.80	38.10	29.40	1.21	1.58	9.97	36.90
871.80	44.93	45.29	45.50	43.30	30.00	34.40	1.16	1.47	8.37	35.77
935.90	43.58	43.84	43.98	46.10	28.50	31.20	1.09	1.71	8.13	35.81
1000.00	43.85	44.08	44.22	33.90	29.90	42.10	1.11	2.29	8.13	35.49

