

Coaxial Directional Coupler

50Ω, 17 dB, 500 to 1350 MHz

NEW!

ZADC-17-14HP



CASE STYLE: F14
CONNECTOR: SMA-Female
PRICE: \$59.95 ea.
QTY.: (1-9)

Maximum Ratings

Operating Temperature	-55°C to 100°C
Storage Temperature	-55°C to 100°C
Power Input	10W max.

Pin Configuration

INPUT	S
OUTPUT	1
COUPLED	2

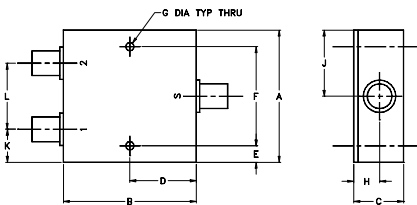
Features

- excellent insertion loss, 0.8 dB typ.
- excellent VSWR, 1.06:1 typ.
- useable over 300-2000 MHz

Applications

- cellular

Outline Drawing



Outline Dimensions (inch/mm)

A	B	C	D	E	F	G
2.00	2.00	.75	1.00	.25	1.500	.125
50.80	50.80	19.05	25.40	6.35	38.10	3.18

H	J	K	L	wt.
.39	1.00	.50	1.00	grams
9.91	25.40	12.70	25.40	170.0

Electrical Specifications

FREQ. RANGE (MHz)	COUPLING (dB)	MAINLINE LOSS (dB)			DIRECTIVITY (dB)			VSWR (:1)	POWER INPUT, W	
		L	M ^o	U	L	M ^o	U		L	MU
f _L -f _U	Nom. Flatness	Typ. Max.	Typ. Max.	Typ. Max.	Typ. Min.	Typ. Min.	Typ. Min.	Typ.	Max.	Max.
500-1350	16.4±0.9 ±1.3		0.8	1.5		29	16	1.06	10	10
800-1000	15.5±0.7 ±0.5		0.8	1.3		30	20	1.06	10	10

⊙ When only specification for M range given, specification applies to entire frequency range.

Typical Performance Data

Frequency (MHz)	Insertion Loss (dB) In-Out	Coupling (dB) In-Cpl	Directivity (dB)	Return Loss (dB)		
				In	Out	Cpl
500.00	0.33	16.67	25.05	34.42	43.77	32.71
600.00	0.41	15.83	26.57	33.61	44.58	32.35
700.00	0.48	15.29	28.41	32.64	41.80	31.15
800.00	0.56	15.00	30.45	31.71	39.27	29.02
900.00	0.63	14.89	31.26	30.89	37.02	26.67
1000.00	0.71	14.97	29.63	30.32	35.50	24.44
1100.00	0.77	15.23	27.45	29.92	34.41	22.44
1200.00	0.83	15.64	25.34	29.39	33.05	20.73
1300.00	0.88	16.17	23.70	28.28	31.24	19.22
1350.00	0.90	16.55	23.01	27.42	30.31	18.54

