

Surface Mount Frequency Mixer

Level 7 (LO Power +7 dBm) 0.5 to 500 MHz

ADE-1+ ADE-1



CASE STYLE: CD636
PRICE: \$1.99 ea. QTY (100)

**+ RoHS compliant in accordance
with EU Directive (2002/95/EC)**

*The +Suffix identifies RoHS Compliance. See our web site
for RoHS Compliance methodologies and qualifications.*

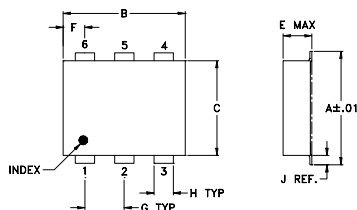
Maximum Ratings

Operating Temperature	-40°C to 85°C
Storage Temperature	-55°C to 100°C
RF Power	50mW
IF Current	40mA

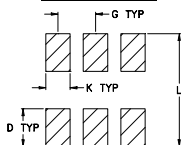
Pin Connections

LO	6
RF	3
IF	2
GROUND	1,4,5

Outline Drawing



PCB Land Pattern

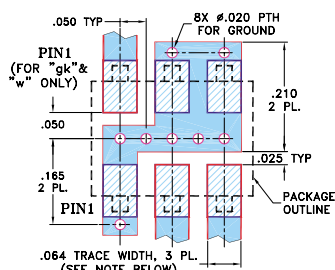


Suggested Layout,
Tolerance to be within ±.002

Outline Dimensions (inch/mm)

A	B	C	D	E	F	G
.272	.310	.220	.100	.162	.055	.100
6.91	7.87	5.59	2.54	4.11	1.40	2.54
H	J	K	L			wt
.030	.026	.065	.300			grams
0.76	0.66	1.65	7.62			0.25

Demo Board MCL P/N: TB-03 Suggested PCB Layout (PL-052)



NOTES: 1. TRACE WIDTH IS SHOWN FOR ROGERS RO4350B WITH DIELECTRIC THICKNESS .030" ± .002"; COPPER: 1/2 OZ. EACH SIDE. FOR OTHER MATERIALS TRACE WIDTH MAY NEED TO BE MODIFIED.
2. BOTTOM SIDE OF THE PCB IS CONTINUOUS GROUND PLANE.

- DENOTES PCB COPPER LAYOUT WITH SMOBC (SOLDER MASK OVER BARE COPPER)
- DENOTES COPPER LAND PATTERN FREE OF SOLDER MASK

Features

- low conversion loss, 5.0 dB typ.
- excellent L-R isolation, 55 dB typ.
- excellent IP3, 15 dBm typ.
- low profile package
- aqueous washable
- protected by US patent 6,133,525

Applications

- VHF/UHF

Electrical Specifications

FREQUENCY (MHz)	CONVERSION LOSS (dB)	LO-RF ISOLATION (dB)			LO-IF ISOLATION (dB)			IP3 at center band (dBm)						
		L	M	U	L	M	U							
0.5-500	DC-500	70	50	55	35	45	30	65	45	40	25	30	20	15

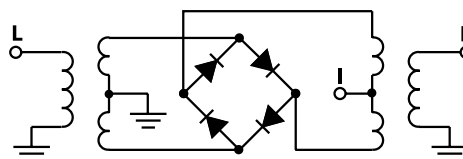
1 dB COMP.: +1 dBm typ.

L = low range [f_l to $10 f_l$]
M = mid band [$2 f_l$ to $f_l/2$]
U = upper range [$f_l/2$ to f_l]

Typical Performance Data

Frequency (MHz)		Conversion Loss (dB)	Isolation L-R (dB)	Isolation L-I (dB)	VSWR RF Port (:1)	VSWR LO Port (:1)
RF	LO	LO +7dBm	LO +7dBm	LO +7dBm	LO +7dBm	LO +7dBm
0.50	30.50	5.68	67.49	56.67	1.46	2.51
0.80	30.80	5.55	67.50	56.83	1.32	2.56
1.00	31.00	5.35	67.51	56.67	1.29	2.56
5.00	35.00	5.06	66.17	55.50	1.19	2.51
10.00	40.00	4.95	65.17	54.17	1.18	2.51
20.00	50.00	5.02	63.50	52.17	1.17	2.56
40.00	70.00	4.89	61.00	48.83	1.14	2.51
63.25	93.25	4.93	58.84	46.33	1.11	2.51
94.82	124.82	4.99	58.00	44.34	1.08	2.56
100.00	130.00	5.08	58.00	43.84	1.08	2.56
126.39	156.39	4.96	56.67	42.17	1.08	2.56
157.97	187.97	5.11	54.16	41.16	1.10	2.51
221.12	251.12	5.15	51.84	40.00	1.05	2.67
250.00	280.00	5.10	53.00	38.67	1.03	2.61
284.26	314.26	5.20	48.33	36.50	1.04	2.67
347.41	377.41	5.43	47.66	33.34	1.10	2.56
378.98	408.98	5.33	47.00	30.67	1.15	2.80
410.56	440.56	5.54	45.50	29.17	1.17	2.80
470.00	500.00	5.81	44.67	28.16	1.14	3.01
500.00	530.00	5.91	43.82	28.50	1.23	3.09

Electrical Schematic



Mini-Circuits®

Distribution Centers NORTH AMERICA 800-654-7949 • 417-335-5935 • Fax 417-335-5945 • EUROPE 44-1252-832600 • Fax 44-1252-837010

Mini-Circuits ISO 9001 & ISO 14001 Certified

INTERNET <http://www.minicircuits.com>



REV. D
M98898
ADE-1
ED-7605/1
DJ/TD/CP/AM
060308
Page 1 of 2

Performance Charts

ADE-1+ ADE-1

