

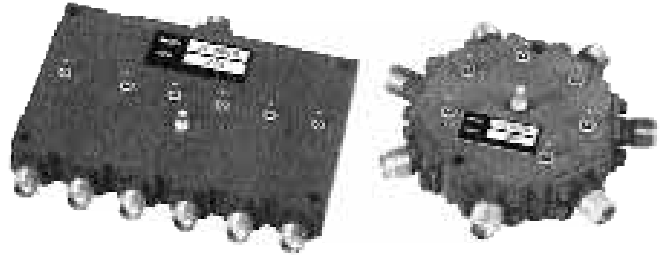
BROADBAND SP6T DIODE SWITCH

HIGH ISOLATION-REFLECTIVE ABSORPTIVE 0.02–18 GHz

SERIES TB600

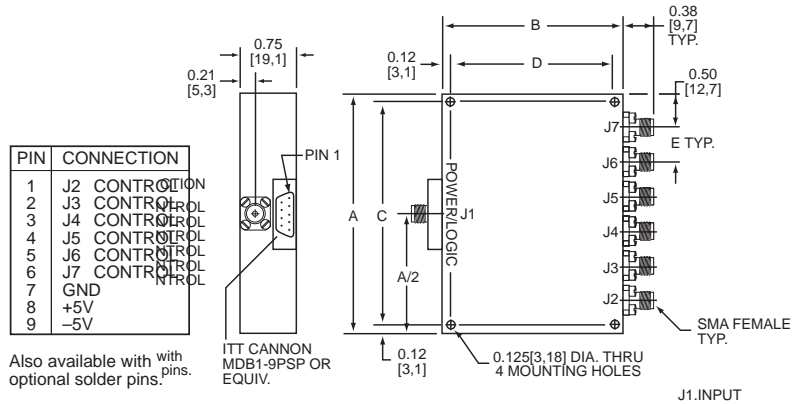
GENERAL SPECIFICATIONS

Frequency Coverage:	0.02 to 18.0 GHz.
RF Impedance:	50 OHMS.
RF Power:	+20 dBm operational. Consult factory for high power options.
DC Requirements:	Switches with diodes require +5v olts at +360 mA and -5v olts at -130 mA supply. Logic is TTL "0" when "on" and "1" when "off".
Temperature Information:	Operating temperature from -55 °C to +85 °C.
Switching Speed:	10% to 90% or 90% to 10% of FR. There is an additional 30 nanosec of driver delay.
Connectors:	RF connectors are SMA Mating connector supplied for all units with multipin connector; ITT Cannon MDB1-9SSL or equiv.



MECHANICAL OUTLINES

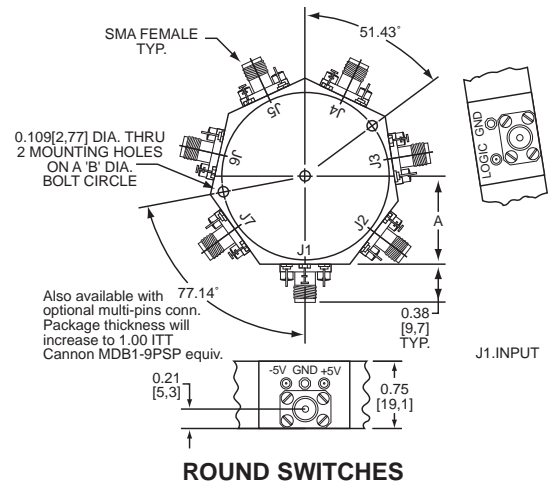
Outline	A in [mm]	B in [mm]	C in [mm]	D in [mm]	E in [mm]
1	3.00 [76,2]	2.00 [50,8]	2.750 [69,91]	1.750 [44,45]	0.40 [10,2]
2	3.50 [88,9]	3.00 [76,2]	3.250 [82,55]	2.750 [69,91]	0.50 [12,7]
3	0.71 [18,0]	1.350 [34,29]	—	—	—
4	1.00 [25,4]	2.000 [50,8]	—	—	—
5	3.50 [88,9]	3.50 [88,9]	3.250 [82,55]	3.250 [82,55]	0.50 [12,7]
6	1.25 [31,75]	2.550 [64,8]	—	—	—



RECTANGULAR SWITCHES

ELECTRICAL PERFORMANCE

Model No.	Frequency Range (GHz)	Type	Insertion Loss		VSWR	Outline #	Speed
			Minimum dB	Maximum dB			
TB-611-HASD	0.02–0.2	ABS	80	1.20	1.85	Rect. 5	2,000 nsec.
TB-622-HARD	0.1–2.0	ABS	80	1.80	1.85	RD 4	2,000 nsec.
TB-641-ASD-1	1.0–2.0	ABS	30	1.20	1.85	Rect. 2	100 nsec.
TB-658-HARD	2.0–8.0	ABS	80	1.80	1.85	RD 6	2,000 nsec.
TB-682-RD-1	6.0–18.0	REFL	60	3.50	2.50	RD 3	100 nsec.
TB-691-HASD	8.0–18.0	ABS	80	3.70	2.50	Rect. 7	2,000 nsec.



ROUND SWITCHES

KEY: Inches[Millimeters].XX ±.03 .XXX ±.010 [.X ±0.8 .XX ±0.25]