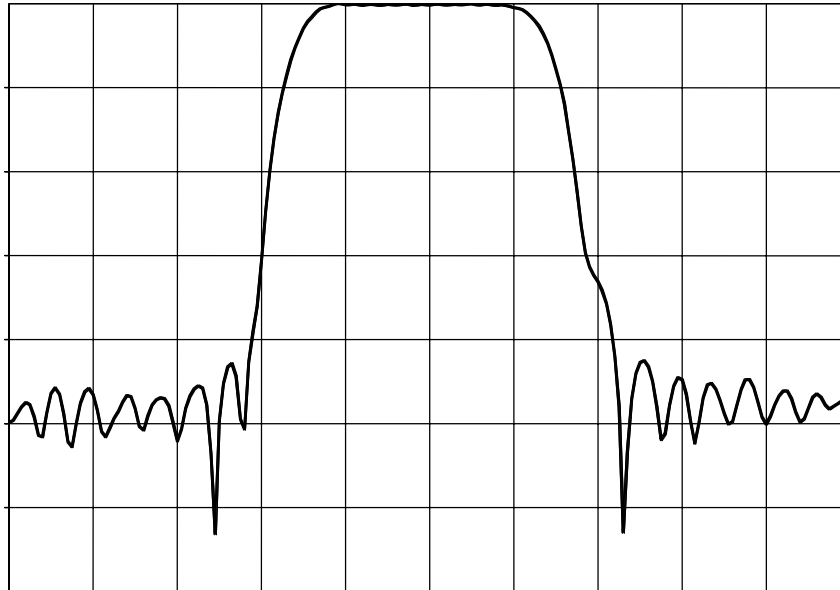




### TYPICAL PERFORMANCE



Horizontal: 2.0 MHz/div

Vertical (from top): Magnitude

10 dB/div

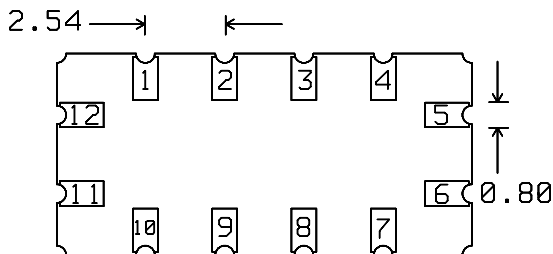
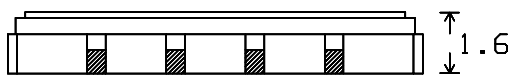
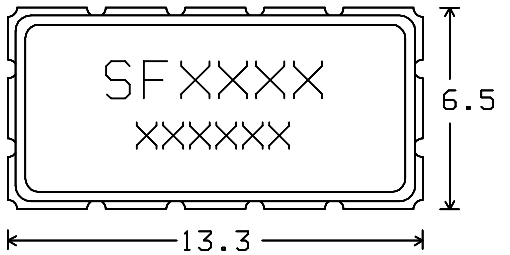
### SPECIFICATION

| PARAMETER   | Min  | Typ   | Max | Units  |
|---|------|-------|-----|--------|
| Center Frequency (F <sub>c</sub> ) <sup>1</sup>                       |      | 261.1 |     | MHz    |
| Operating Bandwidth   | 3.84 | 4.8   |     | MHz    |
| 15 dB Bandwidth   |      | 7.0   | 8.0 | MHz    |
| 35 dB Bandwidth   |      | 8.5   | 16  | MHz    |
| Ultimate Rejection (F <sub>c</sub> -40 MHz to F <sub>c</sub> -24 MHz) | 45   | 47    |     | dB     |
| Ultimate Rejection (F <sub>c</sub> -24 MHz to F <sub>c</sub> -8 MHz)  | 45   | 47    |     | dB     |
| Ultimate Rejection (F <sub>c</sub> +8 MHz to F <sub>c</sub> +24 MHz)  | 40   | 42    |     | dB     |
| Ultimate Rejection (F <sub>c</sub> +24 MHz to F <sub>c</sub> +40 MHz) | 40   | 42    |     | dB     |
| Input Power (ave)   |      |       | +0  | dBm    |
| Insertion Loss  |      | 10    | 13  | dB     |
| Return Loss <sup>2,3</sup>  | 6    |       |     | dB     |
| Source and Load Impedance   |      | 50    |     | Ω      |
| Passband Amplitude Ripple <sup>2</sup>                                |      | 0.5   | 1.0 | dB p-p |
| Passband Group Delay Ripple <sup>2</sup>                              |      | 50    | 80  | ns p-p |
| Operating Temperature Range   |      | 23    |     | ° C    |

- Notes: 1. Fixed reference. All specified bandwidths are centered at or referenced to this frequency.  
 2. To be satisfied across the 3.84 MHz Operating Bandwidth.  
 3. When matched with optimum component values.



### PACKAGE OUTLINE

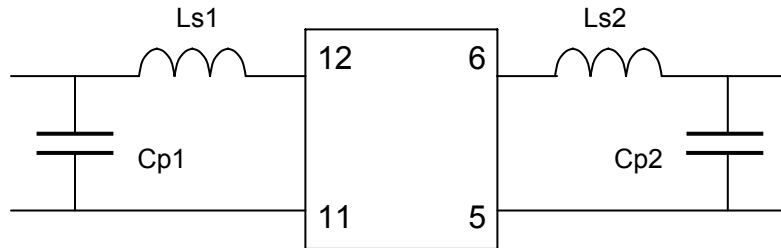


Units: mm

#### Pin Configuration:

|                |                  |
|----------------|------------------|
| Input:         | 12               |
| Input Return:  | 11               |
| Output:        | 6                |
| Output Return: | 5                |
| Ground:        | 1,2,3,4,7,8,9,10 |

### MATCHING CIRCUIT



Typical component values:  
(minimum inductor Q = 45)

Ls1 = 24 nH  
Cp1 = 30 pF

Ls2 = 22 nH  
Cp2 = 30 pF

#### Notes

- Requires 2% matching components.
- Component values may change depending on board layout.
- Recommended Inductors are Coilcraft 0805 series, capacitors are ATC 100 series

ISO 9001  
Registered

### Micro Networks Corporation

Worldwide Headquarters ■ 324 Clark Street ■ Worcester, MA 01606 ■ tel: 508-852-5400 ■ fax: 508-852-8456

European Sales Headquarters ■ Hertosingel 20 ■ 6214 AD Maastricht ■ The Netherlands ■ tel: +31-43-32-70912 ■ fax: +31-43-32-70715

[www.micronetworks.com](http://www.micronetworks.com)