

HIGH FREQUENCY MAGNETICS

T1/E1 Through Hole Hardened Transformer

TM00126

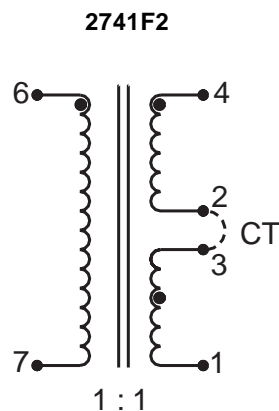
- Operates at the T1 rate of 1.544 Mb/s and the E1 rate of 2.048 Mb/s
- Winding (4-1) is hardened to handle a 6A surge current for 1 second
- Winding (4-1) is designed to handle simplex-feed remote powering current
- Maximum inductance unbalance of center-tapped winding is 0.1%
- Operating temperature range: -40° C to +85° C
- Meets IEC 695, 2-2 flammability requirements
- PWB Process Capability: standard printed wiring board assembly techniques, total-immersion cleaning
- Reliability testing: shock, vibration, temperature cycling, temperature - humidity - bias

ELECTRICAL SPECIFICATIONS AT 25° C

Part Number	Turns Ratio ±2%	Inductance ¹ mH Min	DCR Ω max		Leakage Inductance ² μH max	Interwinding Capacitance pF max	Minimum Interwinding Breakdown Voltage Vrms
	(6-7) : (4-1) ³	(6-7)	(6-7)	(4-1) ³	(6-7)	between (6-7) and (4-2)(3-1)	
2741F2	1 : 1 CT	1.1	0.72	0.45	3.5	18	850

- measured at 10 Hz, 0.1 Vac
- measured at 100 kHz, 0.1 Vac
- connect 2 & 3

SCHEMATIC

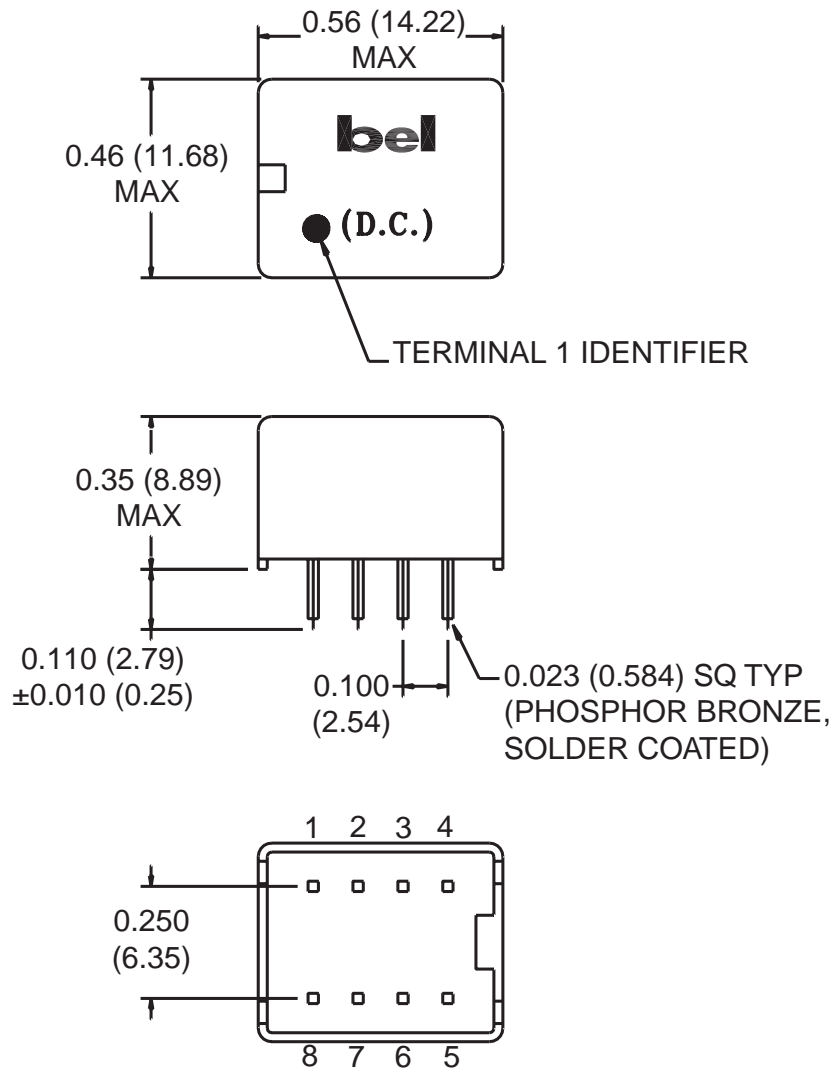


HIGH FREQUENCY MAGNETICS

T1/E1 Through Hole Hardened Transformer

MECHANICAL

2741F2



Unless otherwise specified, dimensions are nominal and in inches (millimeters).

©2000 Bel Fuse Inc. Specifications subject to change without notice. 09.00

CORPORATE

Bel Fuse Inc.
198 Van Vorst Street
Jersey City, NJ 07302
Tel 201-432-0463
Fax 201-432-9542
www.belfuse.com

T1-60

FAR EAST

Bel Fuse Ltd.
8F / 8 Luk Hop Street
San Po Kong
Kowloon, Hong Kong
Tel 852-2328-5515
Fax 852-2352-3706
www.belfuse.com

EUROPE

Bel Fuse Europe Ltd.
Preston Technology Management Centre
Marsh Lane, Suite G7, Preston
Lancashire, PR1 8UD, U.K.
Tel 44-1772-556601
Fax 44-1772-888366
www.belfuse.com